

8059

8,600 lbs capacity

HYDRAULIC



STANDARD FEATURES

- 8,600 lb Lift Capacity @ 5.8 ft
- 29 ft of Hydraulic Reach
- 4 Function Hydraulic Power
- Hex Boom with Low Profile Jib Head
- Boom Mounted Planetary Winch
- Wireless Proportional Control with Digital Crane Load Display

OPTIONS

- LED Boom Tip Light

SPECIFICATIONS

- 60,000 ft-lb Crane Rating
- 27 ft Lifting Height
- 12 ft to 29 ft Reach with 2 Hydraulic Boom Extensions
- 56 FPM Winch Speed
- 3/8" x 120 ft Cable
- 400° Rotation with Sealed Turret
- 2,500 lbs Operating Weight
- 18" Ø Mounting Space Req'd
- 41" Storage Height
- 162" Storage Length
- 25,000 lb min Chassis GVW Req'd
- 8 GPM @ 2,950 PSI Open Center Hyd Req'd
- 33 ft Remote Tether Cord
- Meets ANSI/ASME B30.5(2011), OSHA 1910.180



Exclusive sequenced two Stage Hydraulic Boom Extensions provide a total of 29 ft of reach.

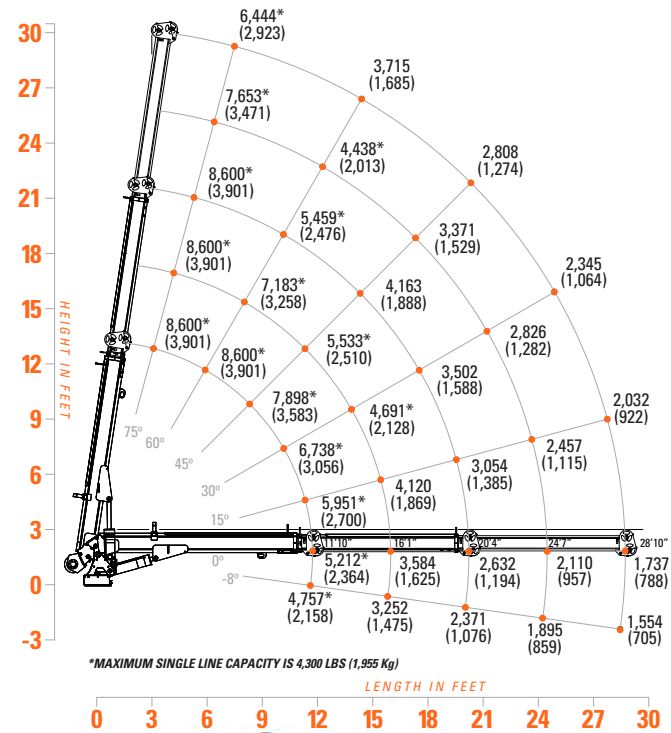


Planetary Winch provides the speed and power necessary for quick lifts and stowing.



Sealed Center Rotation eliminates the need for a drip pan in the crane tower.

LOAD CAPACITIES



The 8059 is perfect fit for those who need a long reach crane on a 26k GVW chassis. Featuring 8,600 lbs of lifting capacity, 29 ft of reach and a wireless remote with digital crane load display, the 8059 will allow you to work confidently in long reach applications.