

6541

6,500 lbs capacity

HYDRAULIC



STANDARD FEAT-

- 6,500 lb Lift Capacity @ 6.2 ft
- 21 ft of Hydraulic Reach
- 4 Function Hydraulic Power
- Hex Boom with Low Profile Jib Head
- Boom Mounted Planetary Winch
- Wireless Proportional Control with Digital Crane Load Display

OP-

- LED Boom Tip Light

SPECIFICA-

- 40,000 ft-lb Crane Rating
- 18.5 ft Lifting Height
- 12 ft to 21 ft Reach with 1 Hydraulic Boom Extension
- 70 FPM Winch Speed
- 3/8" x 120 ft Cable
- 400° Rotation with Sealed Turret
- 1565 lbs Operating Weight
- 18" Ø Mounting Space Req'd
- 37" Storage Height
- 159" Storage Length
- 14,500 lb min Chassis GVW Req'd
- 8 GPM @ 2875 PSI – Open Center Hyd Req'd
- 33 ft Remote Tether Cord
- Meets ANSI/ASME B30.5 (2011),



Auto II Speed automatically reduces the maximum working speed of all crane functions when a load is sensed.

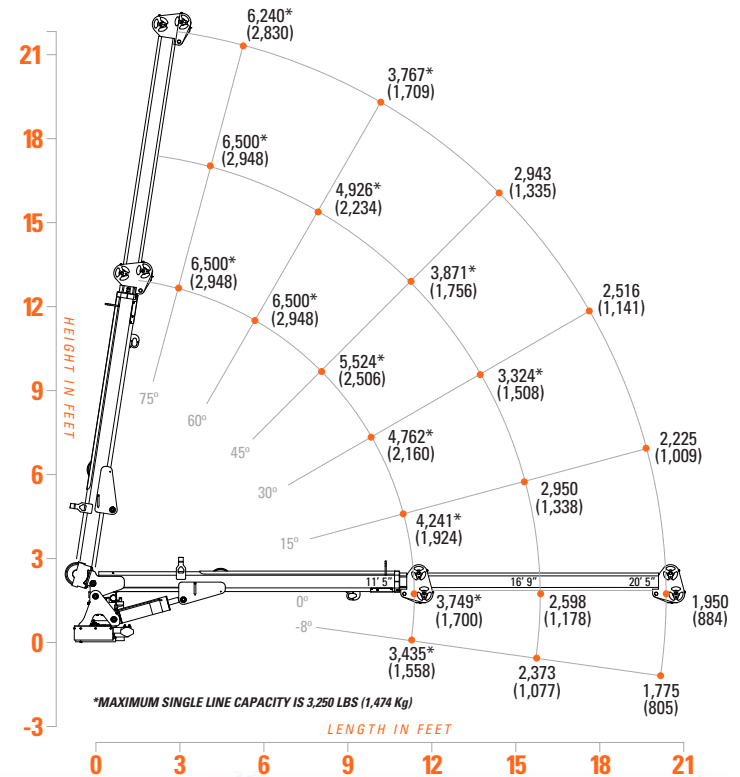


33 ft Tether Cord (included) allows RF Free operation or alternate power.



Boom Tip Light Option adds work area lighting directly below hook. Dual LED lights with side

LOAD CAPACITIES



The 6541 is the most popular Tiger Crane model. Boasting a very strong 40,000 ft/lb rating and 6,500 lbs lift capacity, the 6541 is the crane for your medium duty service truck.