

5031

5,000 lbs capacity

HYDRAULIC



STANDARD FEATURES

- 5,000 lb Lift Capacity @ 6 ft
- 21 ft of Hydraulic Reach
- 4 Function Hydraulic Power
- Hex Boom with Low Profile Jib Head
- Boom Mounted Planetary Winch
- Wireless Proportional Control with Digital Crane Load Display

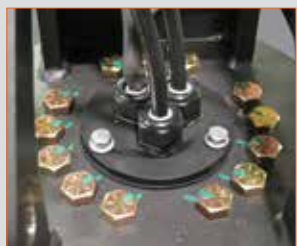
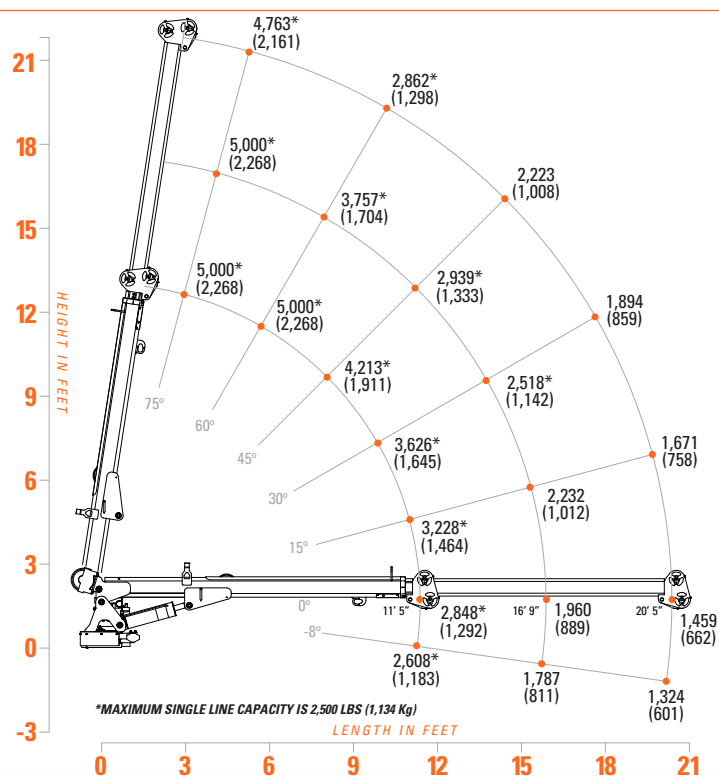
OPTIONAL

- LED Boom Tip Light

SPECIFICATIONS

- 30,000 ft-lb Crane Rating
- 18.5 ft Lifting Height
- 12 ft to 21 ft Reach with 1 Hydraulic Boom Extension
- 70 FPM Winch Speed
- 5/16" x 120 ft Cable
- 400° Rotation with Sealed Turret
- 1380 lbs Operating Weight
- 18" Ø Mounting Space Req'd
- 36" Storage Height
- 159" Storage Length
- 14,500 lb min Chassis GVW Req'd
- 8 GPM @ 2875 PSI – Open Center Hyd Req'd
- 33 ft Remote Tether Cord
- Meets ANSI/ASME B30.5 (2011), OSHA 1910.180

LOAD CAPACITIES



Sealed Center Rotation eliminates the need for a drip pan in the crane tower



Planetary Winch provides the speed and power necessary for quick lifts and stowing



Boom Tip Light Option - Adds work area lighting directly below hook. Dual LED lights.

The 5031 is the smallest of the hydraulic cranes available from Tiger Cranes. Featuring self aligning hex boom design, all hydraulic extension, Auto II Speed, and a strong 30,000 ft/lb rating, the 5031 is a full feature hydraulic crane in a weight saving package.