

# 4027E

**4,000** lbs capacity

ELECTRIC **E**



**STANDARD FEATURES**

- 4,000 lb Lift Capacity @ 3.2 ft
- 16.5 ft of Manual & Hydraulic Reach
- 12 V DC Electric Planetary Winch
- 12 V DC Hydraulic Power Unit
- Full Power x 4 Functions
- 20 ft Corded Remote

**OPTIONAL**

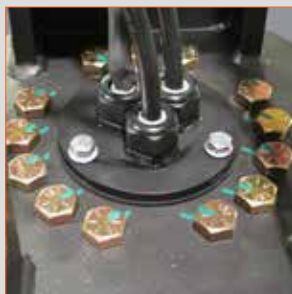
- Wireless Control
- Full Hydraulic Power

**SPECIFICATIONS**

- 18,000 ft-lb Crane Rating
- 14.5 ft Lifting Height
- 9 ft to 15 ft Reach with 1 Hydraulic & 1 Manual Boom Extension
- 22 FPM Winch Speed
- 1/4" x 80 ft Cable
- 400° Rotation with Sealed Turret
- 875 lbs Shipping Weight
- 14" x 14" Mounting Space Req'd
- 34" Storage Height
- 103.22" Storage Length
- 11,000 lb min Chassis GVW Req'd
- Powder Coated Finish
- Meets ANSI/ASME B30.5 (2011) and OSHA 1910.180



Double Reduction Full Power Rotation is very durable and trouble free.

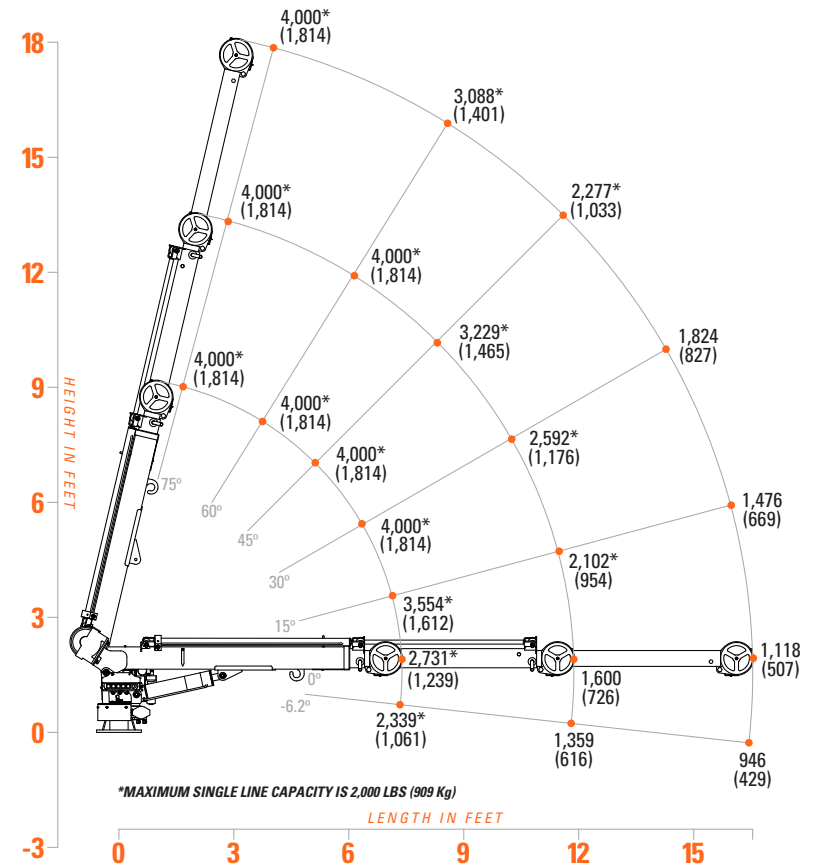


Sealed Center Rotation eliminates the need for a drip pan in the crane tower.



Optional Wireless Remote with Corded Tether adds work zone freedom to crane operation.

**LOAD CAPACITIES**



The 4027E is the most compact full function crane in the Tiger Crane line up. Featuring a manual boom extension, the 4027E was designed to work on 9 ft bodies with/without a raised front cabinet. The 4027E also features a powder coat finish, Anti-Bounce Technology and a very durable corded remote.