



STANDARD FEATURES

- 8,600 lb lift capacity
- 21 ft of hydraulic reach
- 4 hydraulic functions
- Hex boom with low profile jib head
- Boom mounted planetary winch
- Wireless proportional control with digital crane load display
- Auto II Speed control

OPTIONS

- LED boom tip light

SPECIFICATIONS

- 50,000 ft-lb crane rating
- 58,900 ft-lb max moment rating
- 18.5 ft lifting height
- 12 ft to 21 ft reach with one hydraulic boom extension
- 58 FPM winch speed
- 3/8" x 120 ft cable
- 400° rotation with sealed turret
- 1,750 lbs operating weight
- 18" Ø mounting space required
- 41" storage height
- 159" storage length
- 19,500 lb min chassis GVW required
- 8 GPM @ 2,900 PSI open center hydraulic required
- 33 ft remote tether cord
- -8° boom angle



Standard wireless proportional crane and chassis control with digital crane load display.

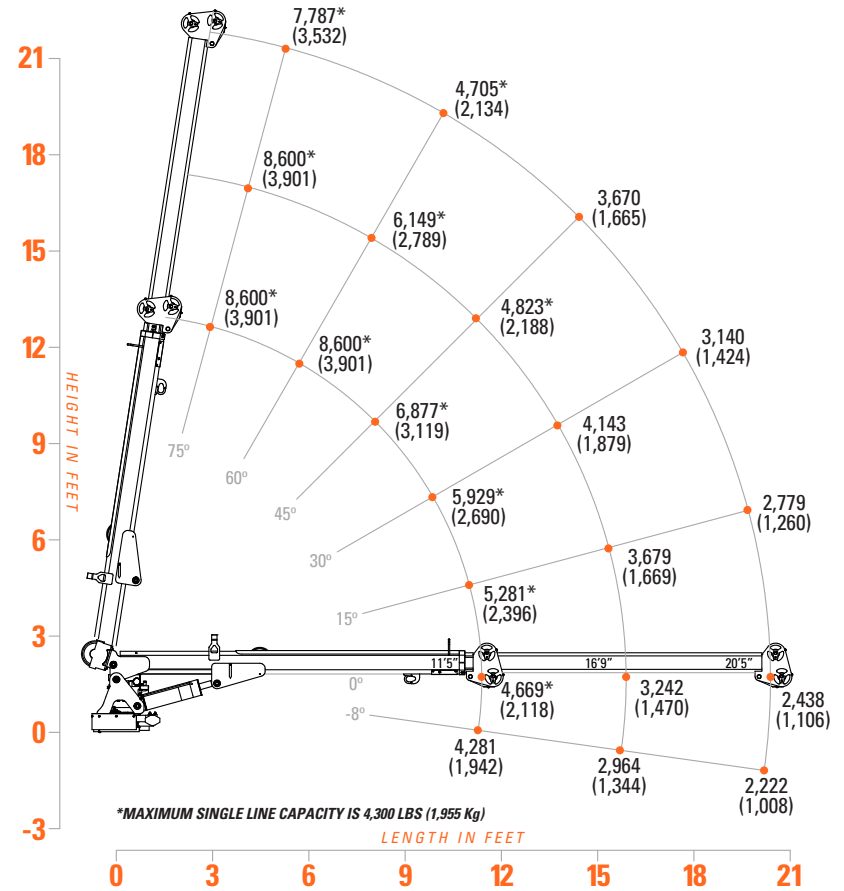


D03 Valve system provides reliable hydraulic control, indicator lights, integrated filtration, and manual overrides.



Auto II Speed automatically reduces the maximum working speed of all crane functions when a load is sensed.

8051 LOAD CAPACITIES



The 8051 is largest crane available to be mounted on a 19.5k GVW chassis. With 8,600 lbs of gross lifting capacity, 21 ft of full hydraulic reach, Auto II Speed control and high speed planetary winch, the 8051 will be your jobsite workhorse.