

# 6542E 6542EP

**6,500** lbs capacity

ELECTRIC

**E**



**STANDARD FEATURES**

- 6,500 lb lift capacity
- 21 ft of hydraulic reach
- Hex boom with low profile jib head
- 3 hydraulic + 1 12V DC functions
- Wireless remote

**OPTIONS**

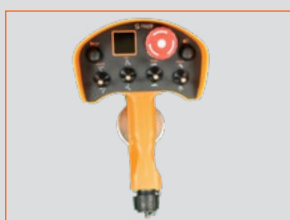
- Wireless three-function proportional control
- LED boom tip light
- 25-ft corded remote

**SPECIFICATIONS**

- 40,000 ft-lb crane rating
- 43,200 ft-lb max moment rating
- 18.5 ft lifting height
- 12 ft to 21 ft reach with one hydraulic boom extension
- 36 FPM winch speed
- 3/8" x 120 ft cable
- 400° rotation with sealed turret
- 1500 lbs operating weight
- 29" Ø mounting space required
- 38.25" storage height
- 160" storage length
- 14,500 lb min chassis GVW required
- -15° boom angle



Standard wireless handheld remote with diagnostics.

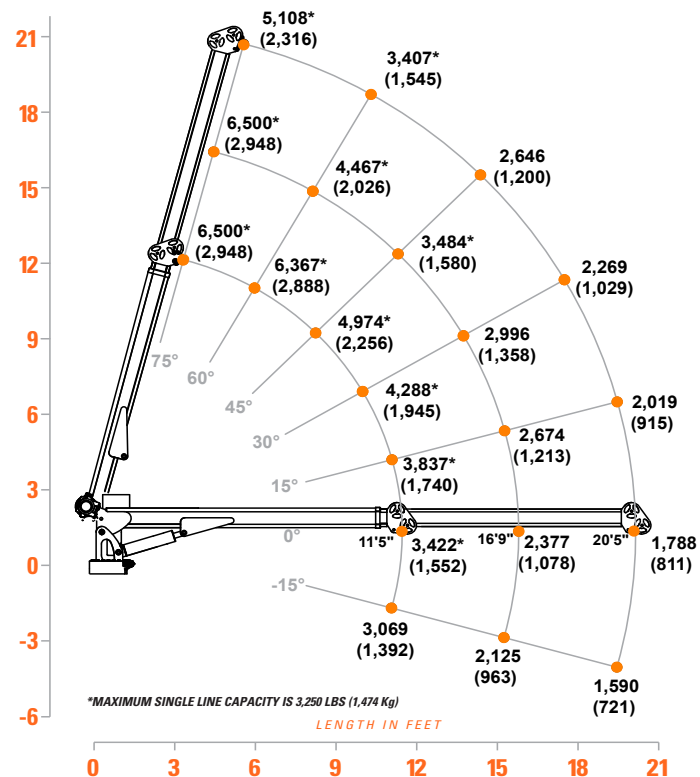


Optional remote with 25' tethered cord (no wireless functionality).



Optional wireless proportional crane and chassis control with digital crane load display.

**6542E/6542EP LOAD CAPACITIES**



The 6542E and EP are the largest electric models available from Tiger Cranes. With industry leading capacity, these cranes will lift your heavy work without a PTO and pump. The 6542E & 6542EP feature 21 ft of full hydraulic reach with self-aligning hex booms, independent 12 V DC pump motor and winch motors for increased duty cycle, and anti-bounce technology.