



STANDARD FEATURES

- 5,000 lb lift capacity
- 21 ft of hydraulic reach
- 4 hydraulic functions
- Hex boom with low profile jib head
- Boom-mounted planetary winch
- Wireless proportional control with digital crane load display
- Auto II speed

OPTIONS

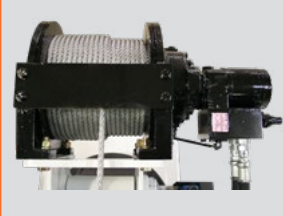
- LED boom tip light

SPECIFICATIONS

- 30,000 ft-lb crane rating
- 32,975 ft-lb max moment rating
- 18.5 ft lifting height
- 12 ft to 21 ft reach with one hydraulic boom extension
- 70 FPM winch speed
- 5/16" x 120 ft cable
- 400° rotation with sealed turret
- 1380 lbs operating weight
- 18" Ø mounting space required
- 36" storage height
- 159" storage length
- 14,500 lb min chassis GVW required
- 8 GPM @ 2875 PSI – open center hydraulic required
- 33 ft remote tether cord
- -15° boom angle



Standard wireless proportional crane and chassis control with digital crane load display.

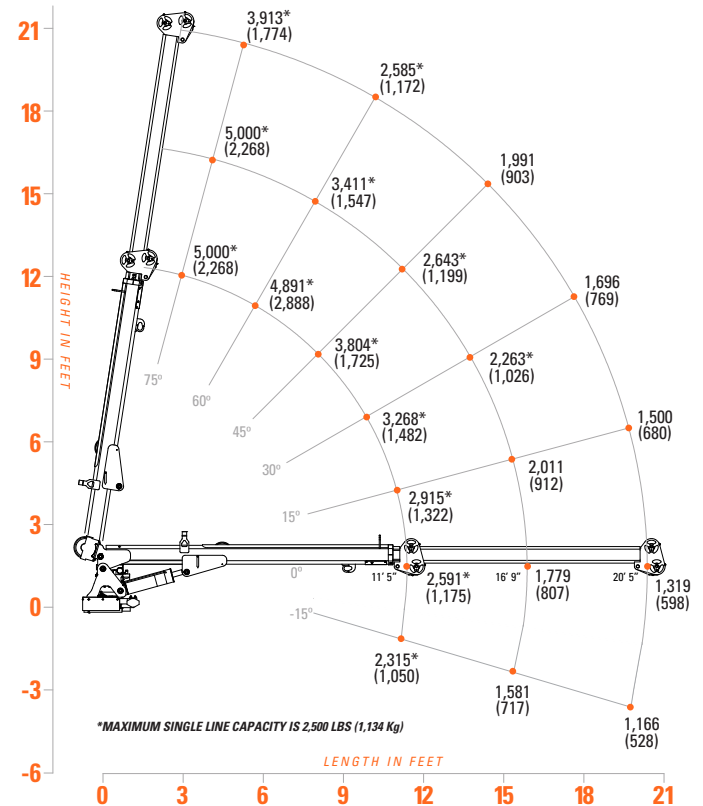


Planetary winch provides the speed and power necessary for quick lifts and stowing.



Sealed center rotation eliminates the need for a drip pan in the crane tower.

5032 LOAD CAPACITIES



The 5032 is the smallest of the hydraulic cranes available from Tiger Cranes. Featuring self-aligning hex boom design, all hydraulic extension, Auto II Speed, and a strong 30,000 ft-lb rating, the 5032 is a full feature hydraulic crane in a weight saving package.