

5032E 5032EP

5,000 lbs capacity

ELECTRIC

E



STANDARD FEATURES

- 5,000 lb lift capacity
- 21 ft of hydraulic reach
- Hex boom with low profile A2B
- 3 hydraulic + 1 12V DC functions
- Wireless remote

OPTIONS

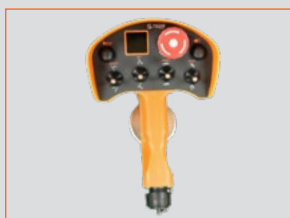
- Wireless three-function proportional control
- LED boom tip light
- 25-ft corded remote

SPECIFICATIONS

- 30,000 ft-lb crane rating
- 32,975 ft-lb max moment rating
- 18.5 ft lifting height
- 12 ft to 21 ft reach with one hydraulic boom extension
- 36 FPM winch speed
- 5/16" x 120 ft cable
- 400° rotation with sealed turret
- 1445 lbs operating weight
- 29" Ø mounting space required
- 38" storage height
- 160" storage length
- 14,500 lb min chassis GVW required
- -15° boom angle



Standard wireless handheld remote with diagnostics.

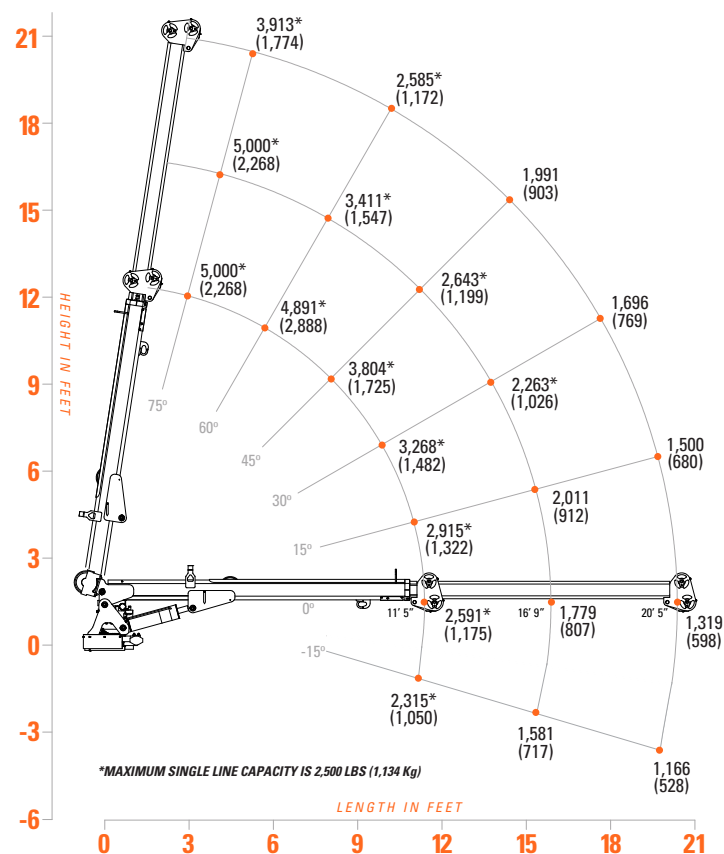


Optional remote with 25' tethered cord (no wireless functionality).



Optional wireless proportional crane and chassis control with digital crane load display.

5032E/5032EP LOAD CAPACITIES



The 5032E and EP are the smallest models built with the hex boom design. Featuring 21-ft of full hydraulic reach with self-aligning hex booms, independent 12 V DC pump motor and winch for increased duty cycle, and anti-bounce technology these electric cranes offer all the big crane features in a weight saving package.