



STANDARD FEATURES

- 2,000 lb lift capacity
- 11 ft of manual reach
- 3 hydraulic + 1 12V DC functions
- Wireless controls
- -15° to 70° power elevation
- 400° powered rotation

OPTIONS

- Tall base
- 25 ft tethered remote control
- Anti-two-block

SPECIFICATIONS

- 8,500 ft-lb crane rating
- 8,900 ft-lb max moment rating
- 11' ft lifting height
- 6.5-8-9.5-11 ft manual boom extension
- 23.5 FPM winch speed
- 3/16" x 40 ft cable
- 425 lbs operating weight
- 11" Ø mounting space required
- 26" storage height
- 91" storage length
- 10,200 lb min chassis GVW required
- -15° boom angle



Standard ergonomic wireless hand-held controls.

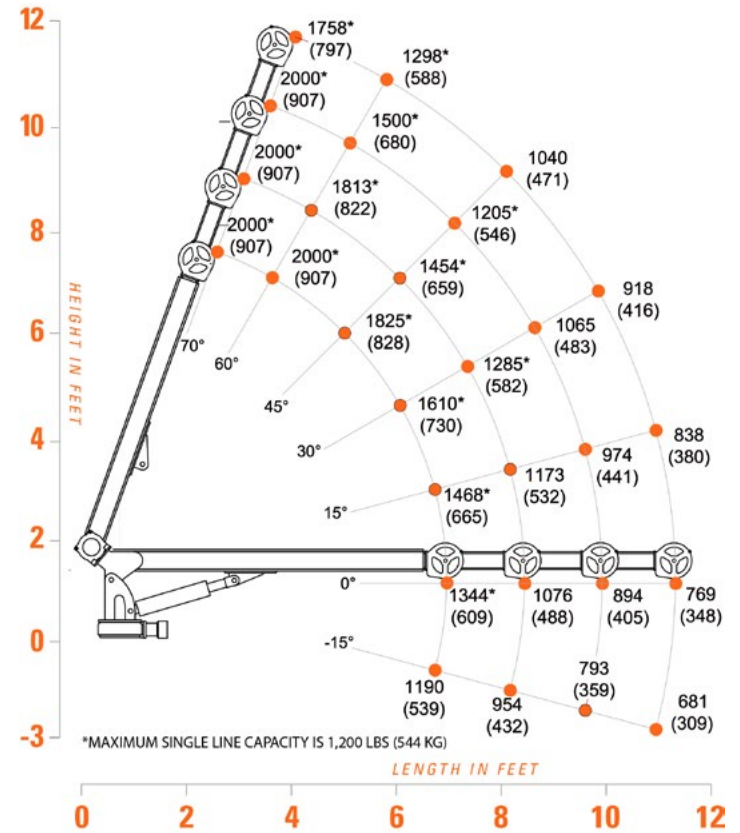


Optional remote with 25' tethered cord (no wireless functionality).



Optional 30" tall base.

2081E LOAD CAPACITIES



The 2081E power rotation and elevation allows you to easily position and handle loads with built-in anti-bounce technology. The 2081E is designed around SRW chassis cab installations, bringing high value to an economical package.