

# 1069

**11,000** lbs capacity

HYDRAULIC



STANDARD FEATURES

- 11,000 lb Lift Capacity @ 5.6 ft
- 29 ft of Hydraulic Reach
- 4 Function Hydraulic Power
- Hex Boom with Low Profile Jib Head
- Boom Mounted Planetary Winch
- Wireless Proportional Control with Digital Crane Load Display

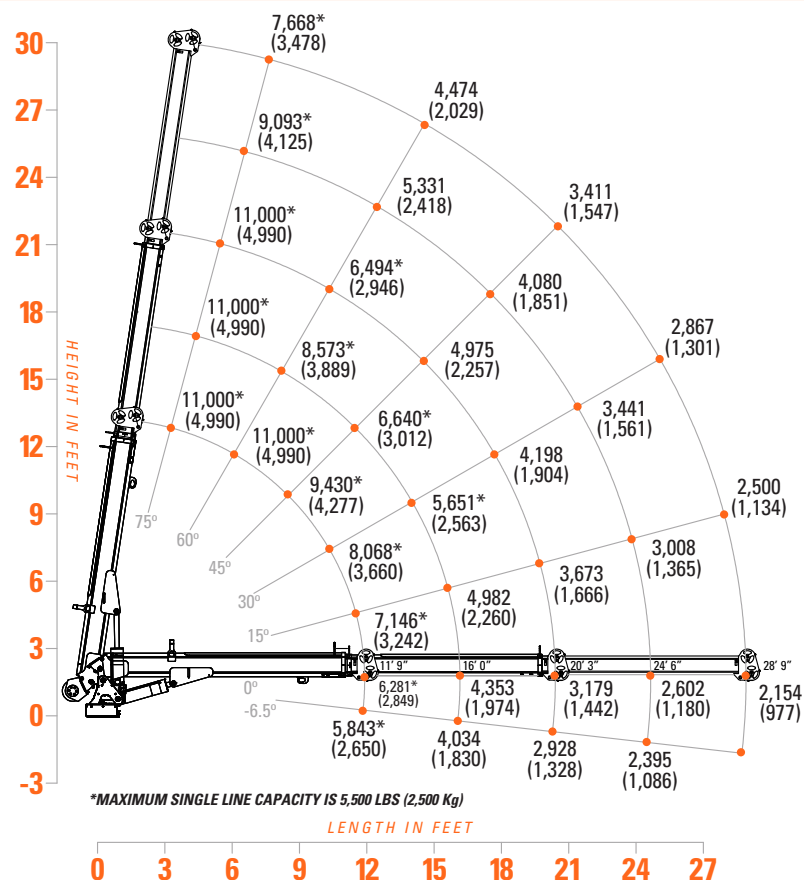
OPTIONAL

- LED Boom Tip Light

SPECIFICATIONS

- 75,000 ft-lb Crane Rating
- 26.5 ft Lifting Height
- 12 ft to 29 ft Reach with 2 Hydraulic Boom Extensions
- 60 FPM Winch Speed
- 7/16" x 120 ft Cable
- 400° Rotation with Sealed Turret
- 2,500 lbs Operating Weight
- 21" Ø Mounting Space Req'd
- 44" Storage Height
- 162" Storage Length
- 25,500 lb min Chassis GVW Req'd
- 10 GPM @ 3,000 PSI Open Center Hyd Req'd
- 33 ft Remote Tether Cord
- Meets ANSI/ASME B30.5(2011),

LOAD CAPACITIES



Wireless proportional crane & chassis control with digital crane load display.



Planetary Winch provides the speed and power necessary for quick lifts and stowing.



Two Stage Hydraulic Boom Extensions provide a total of 29 ft of reach. Exclusive sequenced extension cylinders provide consistent 1st and 2nd stage operation.



The 1069 Tiger Crane features 29 ft of hydraulic reach and 11,000 lbs of lifting capacity, all in a crane that can be mounted on a 25.5k GVW or larger chassis.