

1061

11,000 lbs capacity

HYDRAULIC



STANDARD FEATURES

- 11,000 lb Lift Capacity @ 5.6 ft
- 21 ft of Hydraulic Reach
- 4 Function Hydraulic Power
- Hex Boom with Low Profile Jib Head
- Boom Mounted Planetary Winch
- Wireless Proportional Control with Digital Crane Load Display

OPTIONAL

- LED Boom Tip Light

SPECIFICATIONS

- 66,000 ft-lb Crane Rating
- 18.5 ft Lifting Height
- 12 ft to 21 ft Reach with 1 Hydraulic Boom Extension
- 60 FPM Winch Speed
- 7/16" x 120 ft Cable
- 400° Rotation with Sealed Turret
- 2070 lbs Operating Weight
- 21" Ø Mounting Space Req'd
- 42" Storage Height
- 158" Storage Length
- 25,500 lb min Chassis GVW Req'd
- 10 GPM @ 2775 PSI – Open Center Hyd Req'd
- 33 ft Remote Tether Cord
- Meets ANSI/ASME B30.5(2011), OSHA 1910.180



Auto II Speed automatically reduces the maximum working speed of all crane functions when a load is sensed.

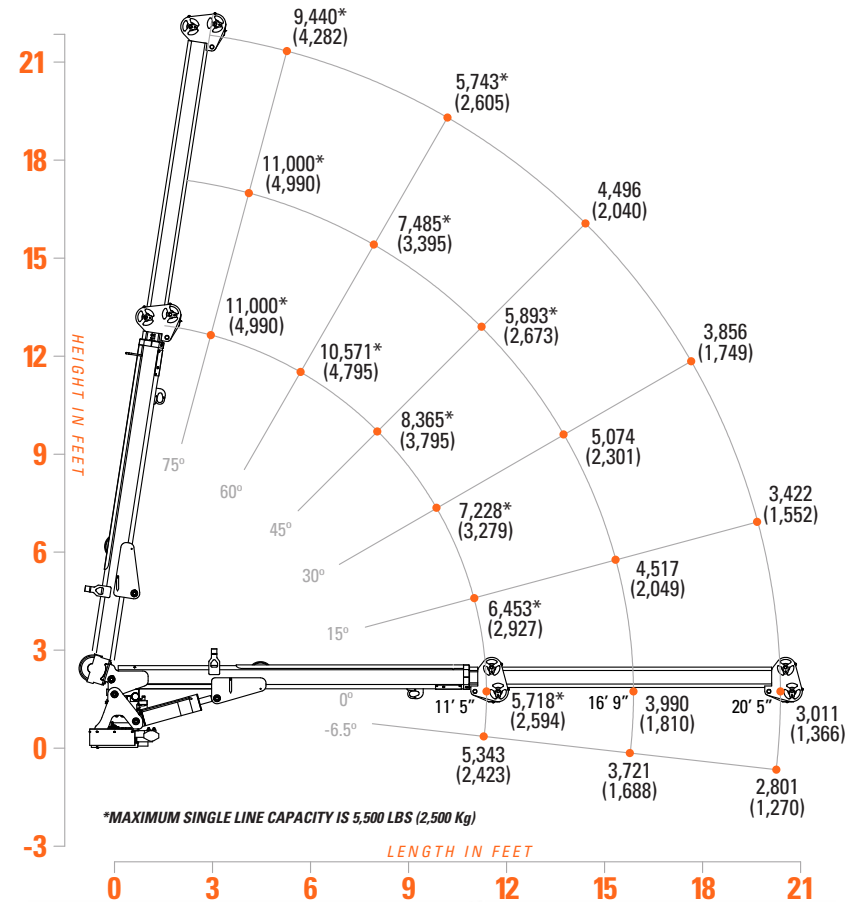


33 ft Tether Cord (included) allows RF Free operation or alternate power.



Boom Tip Light Option adds work area lighting directly below hook. Dual LED lights with side to side adjustment.

LOAD CAPACITIES



The 1061 Tiger Crane is the crane for the heavy lift user that needs big capacity in a compact package. Featuring 11,000 lbs of gross lift, 21 ft of power reach, and the ability to mount on an 11 ft crane body, the 1061 is the crane for heavy duty