

OFFERING A COMPLETE LINE OF LIFT CRANES AND AIR COMPRESSORS TO THE SERVICE INDUSTRY.

# TIGER CRANES

## T8000H



The **TIGER T8000H** is a solid workhorse, that will provide years of smooth and trouble free operation, foreven the most demanding work loads. This is evidenced by the uncompromising features, such as a limited continuous planetary drive rotation, a standard overload protection system, and a 48,000 ft.lbs crane rating, all backed by an exclusive 3 year limited warranty.

The **TIGER T8000H** is a fully hydraulic crane utilizing vehicle supplied hydraulic power for its lift, extend, rotation and winch functions.

The **TIGER T8000H** is available with proportional control, an anti-two block and an optional length manual jib.

### TIGER Model T8000H Specifications

Crane Rating ft./lbs./(Kg/M)	48,000 (6,636)
Lifting Capacity lbs./(kg)	8,000 (3,636)
Lifting Height (from base) in./(cm)	228 (579)
Storage Height (from base) in./(cm)	33.5 (85)
Rotation (limited continuous)	360°
Winch Cable	3/8 in. x 75 ft.
Weight lbs./(kg)	1,650 (740)
Mounting Space in./(cm)	19 x 23 (48 x 58)
Outrigger Recommendation	OR-1 or OR-2 Heavy Duty or Equivalent
Controls:	Detachable Remote 25 ft. of Control Cable

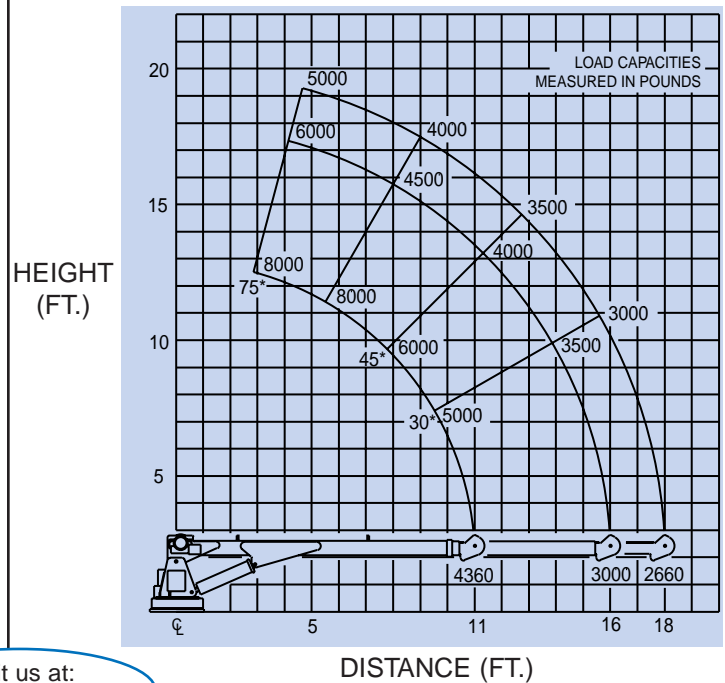
#### MINIMUM CHASSIS REQUIREMENTS

GVW RATING	17,000 lbs 4,000 Kg	HYD PUMP	6 GPM @ 2500 PSI
ALTERNATOR	60 Amp	BATTERY (Cold Crank)	700
WHEEL BASE	133 in 338 cm	BATTERY	200 Minute Reserve
CAB TO AXLE	84 in 152 cm		

Meets ANSI Requirements

**TIGER CRANES ARE NOT INTENDED TO BE USED IN THE LIFTING OR MOVING OF PERSONS.**

### MODEL T8000H



Visit us at:  
[tigercranes.com](http://tigercranes.com)

877 1ST AVE NW • SIOUX CENTER IA 51250  
PHONE: 712-722-3711 • FAX: 712-722-3706  
FOR THE NAME OF THE NEAREST TIGER CRANE DISTRIBUTOR  
CALL TOLL FREE 1-800-225-8789



**QUALITY • PERFORMANCE • RELIABILITY**