

OFFERING A COMPLETE LINE OF LIFT CRANES AND BODIES TO THE SERVICE INDUSTRY.

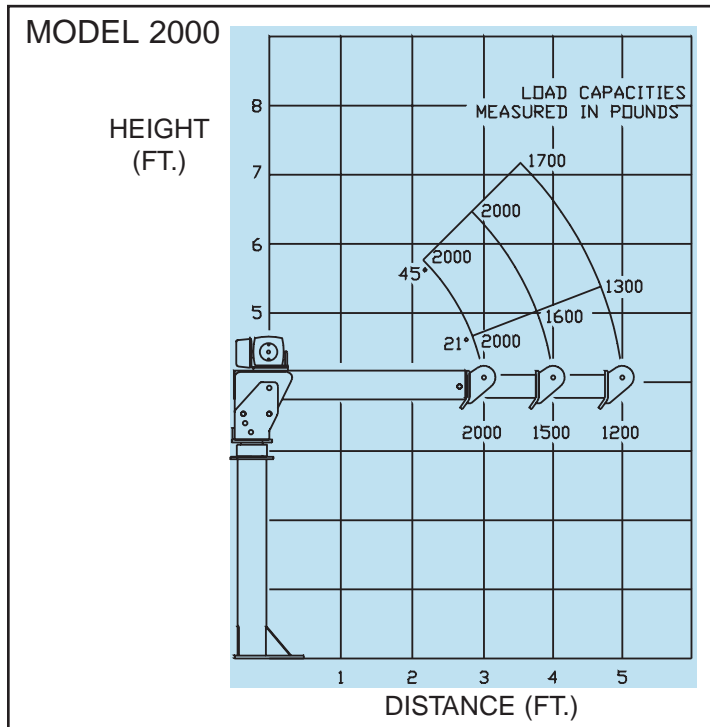
TIGER CRANES

T2000

The **TIGER** T2000 crane is built with the operator in mind. Boom adjustment ranges from the compact storage position to elevations of 0°, 21°, and 45°. Operator ease is maintained with a precision aligned and nylatron bearing rotation spindle, and hand operated full band brake.

The **TIGER** T2000 also features 360° limited continuous rotation, and the choice of two different height bases.

The **TIGER** T2000 uses a 12 V DC electric winch connected to the vehicles electrical system, making this crane ideally suited for service bodies, flatbeds, or pickup trucks.



TIGER Model T2000 Specifications

Crane Rating ft./lbs./ (Kg/M)	6000 (830)
Lifting Capacity lbs./(kg)	2000 (910)
Lifting Height (from base) in./ (cm)	84 (214)
Storage Height (from base) in./ (cm)	49 (125)
Rotation (limited continuous)	360°
Winch Cable	7/32 in x 25 ft 7/32 in x 40 ft opt
Weight lbs./ (kg)	280 (128)
Mounting Space in./ (cm)	12 x 12 (31 x 31)
Outrigger Recommendation	OR-4 Medium Duty or Equivalent
Controls:	Detachable Remote 10 ft of Control Cable

MINIMUM CHASSIS REQUIREMENTS

GVW RATING 8500 lbs 3865 Kg BATTERY 200 Minute Reserve
ALTERNATOR 60 Amp BATTERY (Cold Crank) 500

TIGER CRANES ARE NOT INTENDED TO BE USED IN THE LIFTING OR MOVING OF PERSONS.



SERVICE TRUCKS INTERNATIONAL LTD.

877 1ST AVE NW • SIOUX CENTER IA 51250 • PHONE: 712-722-3711 • FAX: 712-722-3706
FOR THE NAME OF THE NEAREST TIGER CRANE DISTRIBUTOR CALL TOLL FREE 1-800-225-8789

QUALITY • PERFORMANCE • RELIABILITY

OFFERING A COMPLETE LINE OF LIFT CRANES AND BODIES TO THE SERVICE INDUSTRY.

TIGER CRANES

T2000EL

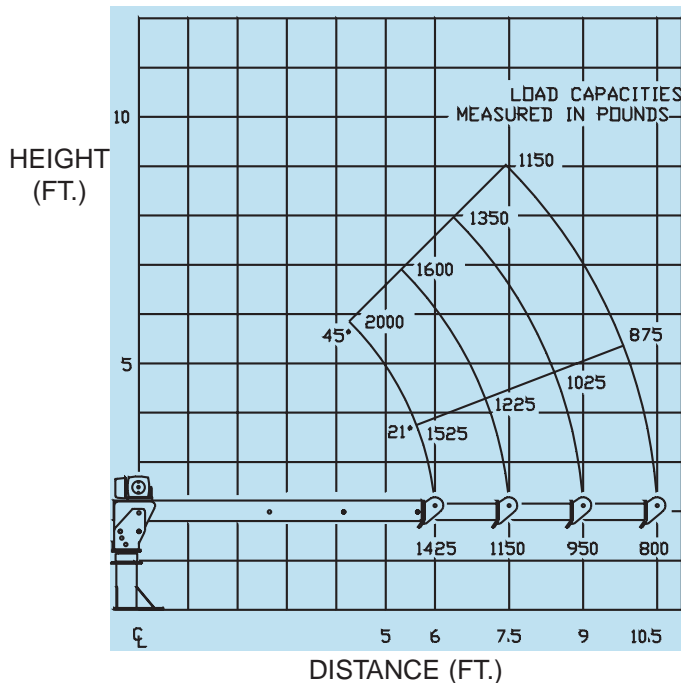
Flexibility is a key feature built into the **TIGER T2000EL** crane. With 12 different working height and reach combinations, a rating of 8500 ft. lbs. and limited continuous rotation, the T2000EL is a big performer.

The **TIGER T2000EL** easily manages large loads, with a counter weight spring system, a precision aligned rotation spindle, and a hand operated full band brake.

The **TIGER T2000EL** utilizes a DC winch connected to the vehicles electrical system, and is available with a choice of two different height bases.



MODEL 2000 EL



TIGER Model T2000EL Specifications

Crane Rating ft./lbs./ (Kg/M)	8,500 (1,175)
Lifting Capacity lbs./ (kg)	2000 (909)
Lifting Height (from base) in./ (cm)	108 (275)
Storage Height (from base) in./ (cm)	34 (86)
Rotation (limited continuous)	360°
Winch Cable	7/32 in x 40 ft
Weight lbs./ (kg)	350 (159)
Mounting Space in./ (cm)	12 x 12 (31 x 31)
Outrigger Recommendation	OR-3 Medium Duty or Equivalent
Controls:	Detachable Remote 12 ft of Control Cable (30 ft OPT)

MINIMUM CHASSIS REQUIREMENTS

GVW RATING	8500 lbs	3865 Kg	BATTERY	200 Minute Reserve
ALTERNATOR	60 Amp		BATTERY	(Cold Crank) 500

TIGER CRANES ARE NOT INTENDED TO BE USED IN THE LIFTING OR MOVING OF PERSONS.



SERVICE TRUCKS INTERNATIONAL LTD.

877 1ST AVE NW • SIOUX CENTER IA 51250 • PHONE: 712-722-3711 • FAX: 712-722-3706

FOR THE NAME OF THE NEAREST TIGER CRANE DISTRIBUTOR CALL TOLL FREE 1-800-225-8789

QUALITY • PERFORMANCE • RELIABILITY