

OFFERING A COMPLETE LINE OF LIFT CRANES AND BODIES TO THE SERVICE INDUSTRY.

TIGER CRANES



T10000

The **TIGER T10000H** is the newest addition to the **TIGER** crane line, providing even more capacity and versatility. The **TIGER T10000H** was designed and built with the same outstanding quality and craftsmanship as the rest of the **TIGER** line.

The **TIGER T10000H** is not only big in size, but also in its capabilities, boasting a 22 ft reach, a lifting height of 23 ft, in addition to mounting height, and a crane rating of 62,000 ft/lbs. The **TIGER T10000H** is a fully hydraulic crane, (with planetary drive rotation and a 360° limited continuous rotation). The crane is controlled by exceptionally smooth 12 VDC solenoids with manual override, and a detachable remote control. Crane overload protection is standard.

The **TIGER T10000H** is available with proportional control, and an anti-two-block preventer.

The **TIGER T10000H** is available with proportional control, and an anti-two-block preventer.

TIGER Model T10000H Specifications

Crane Rating ft./lbs./(Kg/M)	62,000 (8,572)
Lifting Capacity lbs./(kg)	10,000 (4,545)
Lifting Height (from base) in./(cm)	276 (701)
Storage Height (from base) in./(cm)	42 (107)
Rotation (limited continuous)	360°
Winch Cable	7/16 in x 125 ft
Weight lbs./(kg)	2940 (1336)
Mounting Space in./(cm)	25 x 26 (64 x 66)
Controls:	Detachable Remote 35 ft of Control Cable

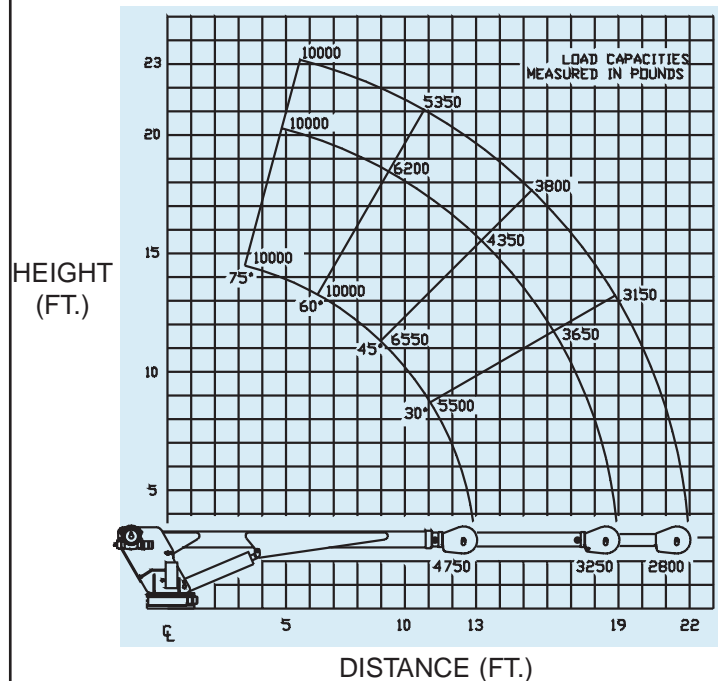
MINIMUM CHASSIS REQUIREMENTS

GVW RATING	25,000 lbs	11,400 Kg	HYD PUMP	8 GPM @ 2500 PSI	
ALTERNATOR	60 Amp		BATTERY (Cold Crank)	700	
WHEEL BASE	177 in	450 cm	CAB TO AXLE	108 in	275 cm

TIGER CRANES ARE NOT INTENDED TO BE USED IN THE LIFTING OR MOVING OF PERSONS.

Visit us at:
tigercranes.com

MODEL 10000



SERVICE TRUCKS INTERNATIONAL LTD. - A Division of Sioux Automation Center, Inc.
877 1ST AVE NW • SIOUX CENTER IA 51250 • PHONE: 712-722-3711 • FAX: 712-722-3706
FOR THE NAME OF THE NEAREST TIGER CRANE DISTRIBUTOR CALL TOLL FREE 1-800-225-8789

QUALITY • PERFORMANCE • RELIABILITY