

Stellar Cranes



XTENDER

As a leader in crane technology, Stellar Industries is proud to be the first to offer a boom extender. The Stellar X-Tender is a self-storing jib boom, available for the Stellar Industries' 10620 crane.

The Stellar X-Tender provides reach out to 30', with a 1000 lbs. maximum capacity. When not in use, it folds safely and easily against the outer boom section by simply removing a pin and rotating the jib boom. Finally, by flipping the sleeve down, and re-rigging the cable for a two-part line, the machine is returned to a 10,000 lb. capacity crane with 20' of hydraulic reach.



This unit meets ANSI B30.5 specs, and comes complete with an anti two-block device. Painted white in Imron 5000, and a single-part swivel is standard.*

At Stellar Industries, we work hard to design products that offer versatility, and efficiency, while offering dependability to reduce maintenance. At Stellar Industries, we are committed to giving you the competitive edge.

Visit our website to stay in touch with Stellar Industries, for more new and innovative products.

www.mechanictruck.com



Designed & Manufactured
in the USA **STELLAR**
INDUSTRIES INC.

* This unit is NOT available in ship-out version, less crane.
Also not available as a retro fit to existing 10620 cranes.

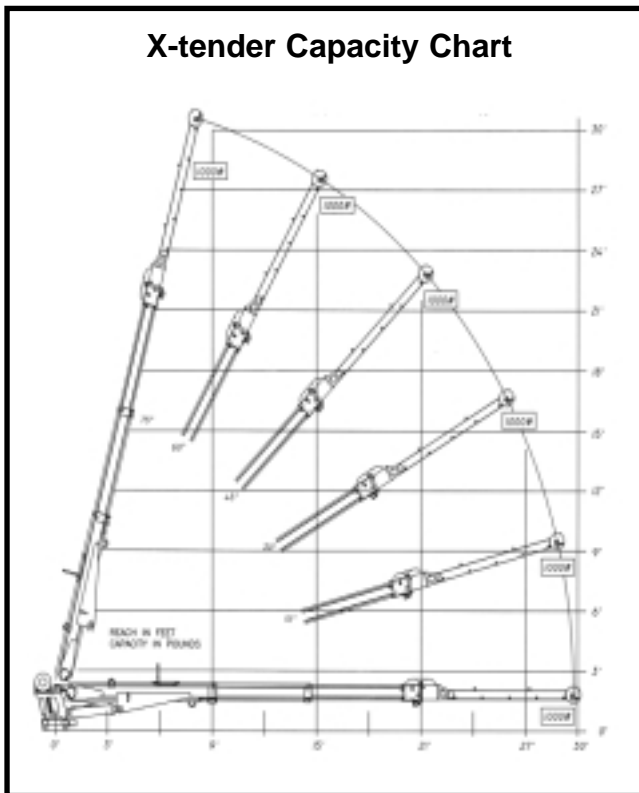
X-Tender Jib Boom



X-Tender folded and stowed



Anti-two block system integrity is maintained whether the X-Tender is deployed or not.



X-tender jib boom extended to the full 30'

X-Tender SPECIFICATION SHEET

Length:	Extends 10620 crane to 30'
Lifting capacity:	1000 lbs.
Weight:	135 lbs.

280 West Third Street
P.O. Box 169
Garner, IA 50438
Telephone: 800-321-3741
Fax: 641-923-2812
Internet: www.mechanictruck.com
email: sales@mechanictruck.com



Designed & Manufactured in the U.S.A.

*Specifications subject to change without notification.