

# Stellar Cranes



The 9620 is an ideal crane for heavy equipment dealers, construction companies, mining companies, and various other large equipment companies. This crane features a 55,000 foot pound capacity with a maximum lifting capacity of 8,600 pounds at six feet four inches. Stellar Industries is the only U.S. manufacturer in this class of crane to offer several unique features as standard equipment. These include the standard proportional radio remote control, hexboom construction, a planetary winch with 60 feet per minute winch speed and hydraulic extensions to 20 feet of reach .

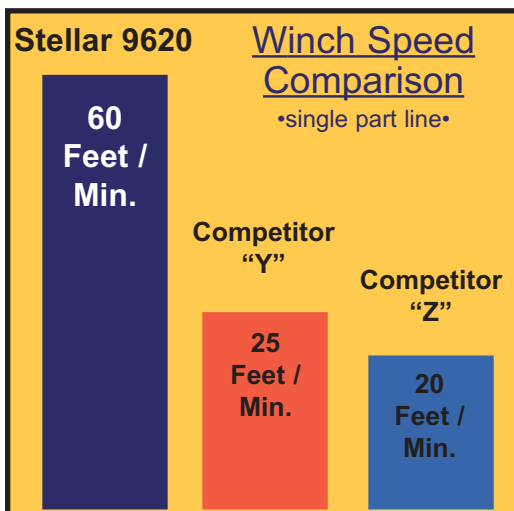
## Master Your Control

The Stellar 9620 is the only crane in its class to offer a state-of-the-art, fully proportional radio remote as a standard feature. With the radio remote control, an operator can be in the best location to see their work and the load being lifted and it also allows them to stay out of harms way. The radio remote incorporates a proportional "trigger" that allows the operator to feather the crane for precise control capabilities. In addition, the radio remote control handle includes engine start / stop functions, compressor on/off, engine speed controls, and emergency shut-off.



## The Speed You Need

Increased winch speed has been the most common request from the field. Stellar has incorporated a planetary winch system with speeds to 60 ft./min., giving you over twice the speed of the competition. Since it's a planetary winch, you get the security of mechanical and hydraulic brakes as well.



Designed & Manufactured in the USA **STELLAR**  
INDUSTRIES INC.

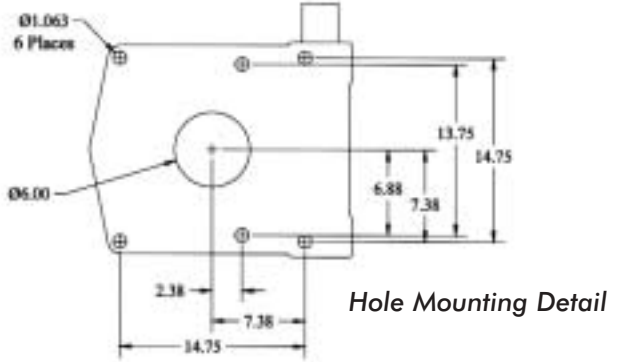
9620 Telescopic Crane

# Stellar Cranes

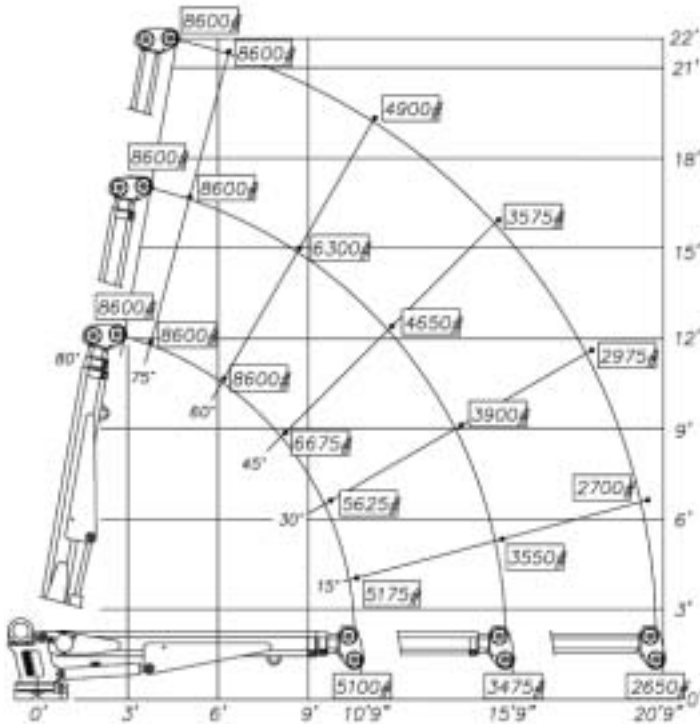
## Designed With You In Mind

The 9620 telescopic crane brings more value added features to the market than any crane in its class. Our design parameters were developed using months of input from users throughout North America.

The features designed into the 9620 allow the user to do their job quicker, more efficient, and easier than any competitive product. At Stellar Industries, we are committed to helping you work more productively.



## 9620 Capacity Chart



### Model 9620 Crane SPECIFICATION SHEET

Crane Rating: 55,000 ft-lbs  
 Standard Boom Length: 10' 9" from CL of Crane

Boom Extension:  
 1st stage: Hydraulic 60"  
 2nd stage: Hydraulic 60"

Max. Horizontal Reach: 20'9" from CL of Crane  
 Max. Vertical Lift: 22'  
 (from crane base)

Boom Elevation: -5 to +80 degree

#### Winch Specification:

Rope Diameter: 3/8"  
 Line Pull Speed: 60 ft/min  
 Max. Single Part Line: 4300 lbs  
 Max. Double Part Line: 8600 lbs  
 Rotation: 400° power (worm gear)

Lifting Capacities:  
 5100 lbs @ 10'9"  
 3475 lbs @ 15'9"  
 2650 lbs @ 20'9"

Power Supply Required: PTO & Pump (7-10 gpm @ 3000 psi)  
 Controls: Radio control standard for all functions.

Stowed Height: 32"  
 (crane only)

Mounting Space Required: 20" x 21"

Shipping Weight: 2120 lbs.

280 West Third Street  
 P.O. Box 169  
 Garner, IA 50438  
 Telephone: 800-321-3741  
 Fax: 641-923-2812  
 Internet: [www.mechanictruck.com](http://www.mechanictruck.com)  
 email: [sales@mechanictruck.com](mailto:sales@mechanictruck.com)



Designed & Manufactured in the U.S.A.

\*Specifications may change without notification.  
 Copyright © 2002 Stellar Industries, Inc.