

# Stellar Cranes



Remember the hassles of pulling pins and wrestling a manual extension to get 20 feet of reach? Well those days are gone with the Stellar 6620. Stellar is the only U.S. manufacturer in this class of crane to offer two hydraulic extensions to 20 feet of reach. By incorporating two hydraulic extensions, there is no need to manually pull out extensions. We let the crane do the extending, not the operator. Stellar Industries is the only U.S. manufacturer in this class of crane to offer several unique features as standard equipment. These include the standard proportional radio remote control, hexboom construction and a planetary winch with 60 feet per minute winch speed.

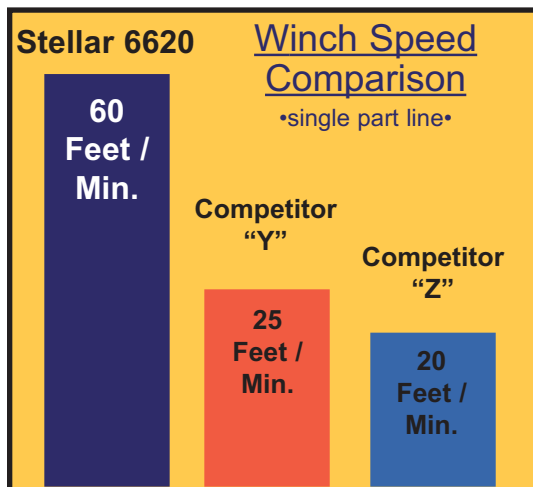
## Master Your Control

The Stellar 6620 is the only crane in its class to offer a state of the art radio remote as a standard feature. With the radio remote control an operator can be in the best location to maintain eye contact with their work and the load being lifted. Our radio remote also incorporates a proportional "trigger" that allows you to feather the crane for precise control capabilities. In addition, the radio remote control handle includes engine start / stop functions, compressor on/off, engine speed control and emergency shut-off.



## The Speed You Need

Increased winch speed has been the most common request from the field. Stellar has incorporated a planetary winch system with speeds to 60 ft./min., giving over twice the speed of the competition. Since it's a planetary winch, you get the security of mechanical and hydraulic brakes as well.



Designed & Manufactured  
in the USA **STELLAR**  
INDUSTRIES INC.

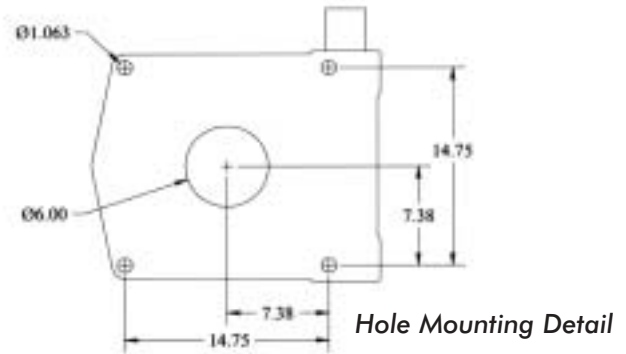
6620 Telescopic Crane

# Stellar Cranes

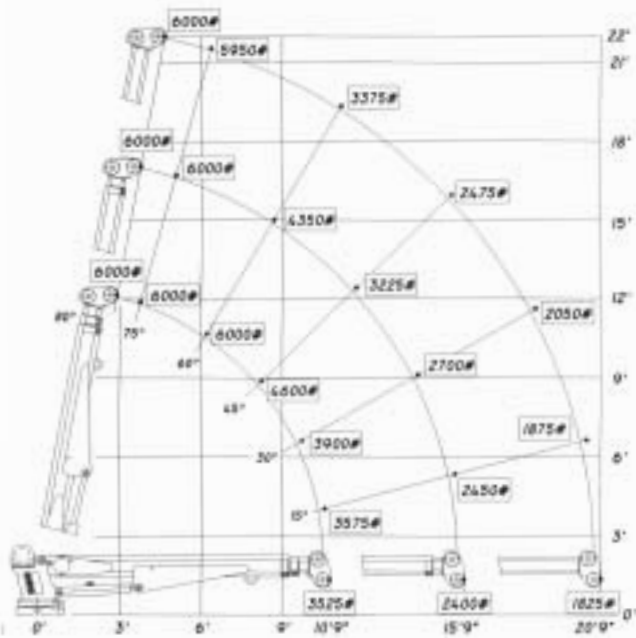
## Designed With You In Mind

The 6620 telescopic crane brings more value added features to the market than any competitive crane in its class. The design parameters were developed using months of input from users throughout North America.

The 6620 features were designed to allow the user to do their job faster, more efficiently, and more easily than with any competitive product. Stellar Industries, is not only committed to making a quality product, it's committed to helping you work more productively.



## 6620 Capacity Chart



### Model 6620 Crane SPECIFICATION SHEET

Crane Rating: 38,000 ft-lbs  
Standard Boom Length: 10' 9" from CL of Crane

Boom Extension:  
1st stage: Hydraulic 60"  
2nd stage: Hydraulic 60"

Max. Horizontal Reach: 20'9" from CL of Crane  
Max. Vertical Lift: 22'  
(from crane base)

Boom Elevation: -5° to +80°

**Winch Specification:**  
Rope Diameter: 5/16"  
Line Pull Speed: 60 ft/min  
Max. Single Part Line: 3000 lbs  
Max. Double Part Line: 6000 lbs  
Rotation: 400° power  
(worm gear)

Lifting Capacities:  
3525 lbs @ 10'9"  
2400 lbs @ 15'9"  
1825 lbs @ 20'9"

Power Supply Required: PTO & Pump  
(8 gpm @ 2850 psi)

Controls: Radio control standard for all functions

Stowed Height: 32"  
(crane only)

Mounting Space Required: 20" x 21"

Shipping Weight: 1625 lbs.

280 West Third Street  
P.O. Box 169  
Garner, IA 50438  
Telephone: 800-321-3741  
Fax: 641-923-2812  
Internet: [www.mechanictruck.com](http://www.mechanictruck.com)  
email: [sales@mechanictruck.com](mailto:sales@mechanictruck.com)



Designed & Manufactured in the U.S.A.

\*Specifications may change without notification.  
Copyright © 2002 Stellar Industries, Inc.