

Stellar Cranes



The 5728 is an ideal crane for public utilities, municipalities, water works, and any other situation needing heavy lifting at a long range (28'). This crane features a 36,000 foot pound capacity and can lift a maximum of 5,000 pounds at seven feet. Stellar Industries is the only U.S. manufacturer in this class of crane to offer several unique features as standard equipment. These include the standard proportional radio remote control, a planetary winch with 60 feet per minute winch speed, hexboom construction and hydraulic extensions to 28 feet of reach.

Master Your Control

The Stellar 5728 is the only crane in its class to offer a state-of-the-art fully proportional radio remote as a standard feature. With the radio remote control an operator can be in the best location to see their work and the load being lifted while remaining out of harms way. The radio remote incorporates a proportional "trigger" that allows the operator to feather the crane for precise control capabilities. In addition, the radio remote control handle includes engine start/stop functions, compressor on/off, engine speed controls, and emergency shut-off.



The Speed You Need

Increased winch speed has been the most common request from the field. Stellar has incorporated a planetary winch system with speeds to 60 ft./min., giving you increased speed over the competition. Since it's a planetary winch, you get the security of mechanical and hydraulic brakes.



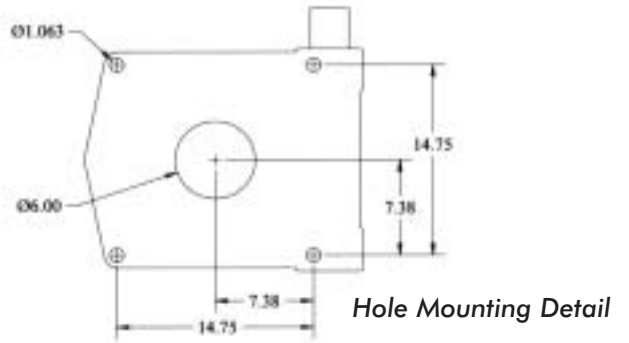
Designed & Manufactured in the USA **STELLAR** INDUSTRIES INC.

5728 Telescopic Crane

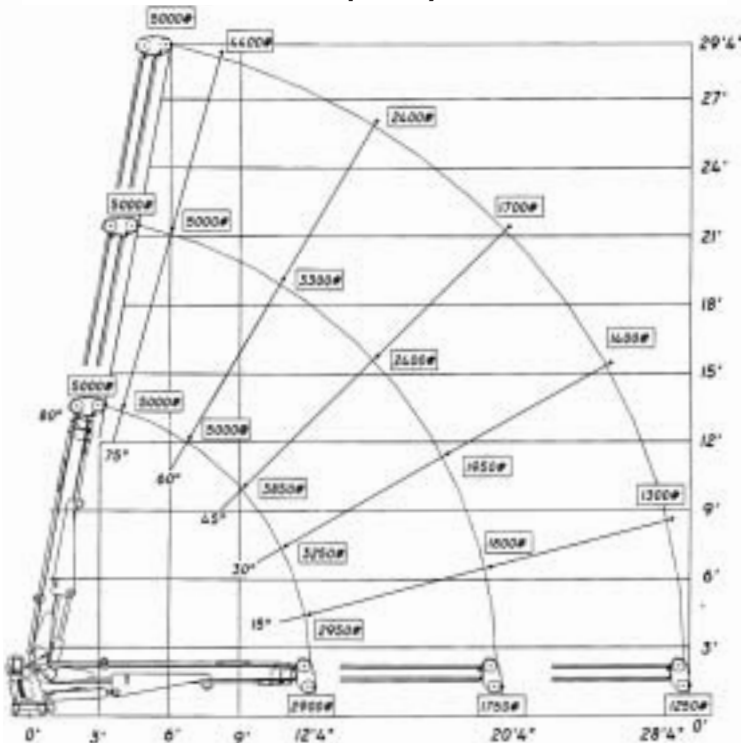
Stellar Cranes

Designed With You In Mind

Stellar Industries designed the 5728 telescopic crane incorporating all of the best features of our companies' "stellar" crane product line. In addition to features standard to the telescopic line, this machine is capable of full hydraulic extension to 28'4". This feature sets this size of crane at the "head of the class" in the 5000 pound category.



5728 Capacity Chart



Model 5728 Crane SPECIFICATION SHEET

Crane Rating: 36,000 ft-lbs
 Standard Boom Length: 12'4" from CL of Crane

Boom Extension:
 1st stage: Hydraulic 96"
 2nd stage: Hydraulic 96"

Max. Horizontal Reach: 28' from CL of Crane
 Maximum Vertical Lift: 29'4"
 (from crane base)

Boom Elevation: -8° to +80°

Winch Specification:

Rope Diameter: 5/16"
 Line Pull Speed: 60 ft/min
 Max. Single Part Line: 2500 lbs
 Max. Double Part Line: 5000 lbs
 Rotation: 400° power (worm gear)

Lifting Capacities:
 2900 lbs @ 12'4"
 1750 lbs @ 20'4"
 1250 lbs @ 28'4"

Power Supply Required: PTO & Pump (8.0 gpm @ 2300 psi)
 Controls: Radio control standard for all functions.

Stowed Height: 34"
 (crane only)

Mounting Space Required: 20" x 21"

Shipping Weight: 2350 lbs

280 West Third Street
 P.O. Box 169
 Garner, IA 50438
 Telephone: 800-321-3741
 Fax: 641-923-2812
 Internet: www.mechanictruck.com
 email: sales@mechanictruck.com



Designed & Manufactured in the U.S.A.

*Specifications may change without notification.
 Copyright © 2002 Stellar Industries, Inc.