

Stellar Cranes



The 3315 electric/hydraulic crane was designed to meet the needs of public utilities, municipalities, water works, construction companies and any other situations requiring an electric/hydraulic crane in medium lifting range. This crane features a 11,500 foot/pound capacity and can lift a maximum of 3,200 pounds at three feet. Stellar Industries is the only U.S. manufacturer in this class of crane to offer several unique features. These include a planetary winch with a hydraulic/mechanical brake system, 30 feet per minute winch speed and hexagonal tubing boom construction.

Hexagonal Boom Construction

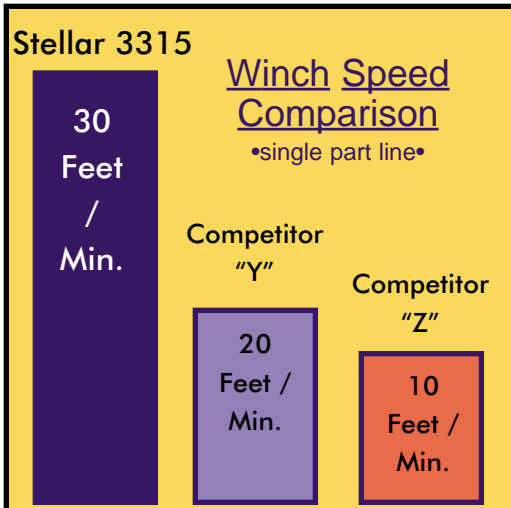
The exceptional hexagonal boom construction on all Stellar cranes provides a stronger cross section than square tubing. This design reduces boom flex and side to side movement.

The Speed You Need

Maximizing winch speed has been the most common request from the field. Stellar has incorporated a planetary winch system with speeds to 30 ft./min., giving you increased speed over the competition. Since it's a planetary winch, you get the security of mechanical and hydraulic brakes.



Designed & Manufactured
in the USA **STELLAR**
INDUSTRIES INC.



3315 Telescopic Crane

Stellar Cranes



Model 3315 Crane SPECIFICATION SHEET

Crane Rating:	11,500 ft-lbs
Standard Boom Length:	7' from CL of Crane
Boom Extension:	
1st stage:	Hydraulic 48"
2nd stage:	Manual 48"
Max. Horizontal Reach:	15' from CL of Crane
Maximum Vertical Lift: (from crane base)	16'9"
Boom Elevation:	-5 to +80 degree
Stowed Height: (crane only)	31.5"
Mounting Space Required:	18 x 15 inches
Shipping Weight:	800 lbs
Controls:	20 foot cord with hand held control for all functions

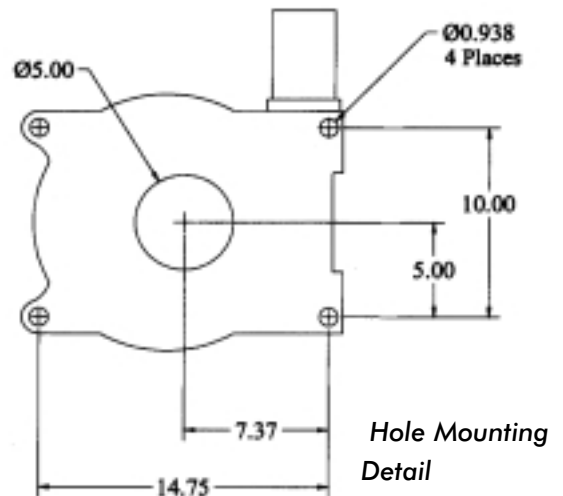
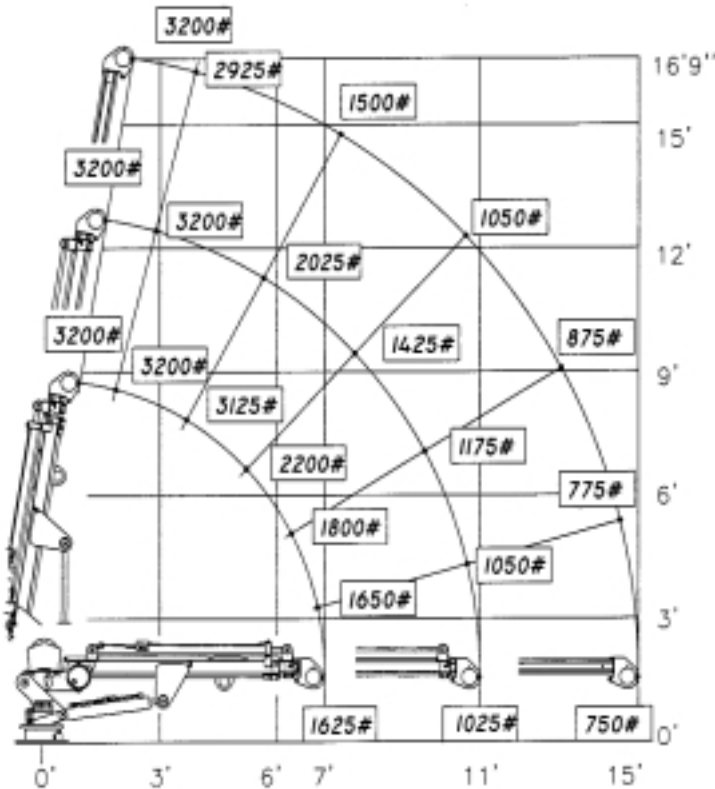
Winch Specification

Rope Diameter:	1/4"
Line pull speed:	30 ft/min
Max. single part line:	1600 lbs
Max. double part line:	3200 lbs
Rotation:	370 degree power (worm gear)

Lifting Capacities:	1625 lbs @ 7'
	1025 lbs @ 11'
	750 lbs @ 15'

Power Supply Required:	12 volt power unit (2.0 gpm @ 2300 psi)
------------------------	--

3315 Capacity Chart



280 West Third Street
P.O. Box 169
Garner, IA 50438
Telephone: 800-321-3741
Fax: 641-923-2812
Internet: www.mechanictruck.com
email: sales@mechanictruck.com



Designed & Manufactured in the U.S.A.

*Specifications may change without notification.
Copyright © 2002 Stellar Industries Inc.