

# Stellar Cranes



The 10628 is the perfect crane for mining companies, heavy equipment dealers, construction companies, and various other large equipment companies where a longer reach is needed. This crane features a 55,000 foot pound capacity and can lift a maximum of 10,000 pounds at 5.5 feet and 1,925 pounds at 28 feet. Stellar Industries is the premier U.S. manufacturer in this class of crane to offer these unique features which include the standard proportional radio remote control, a planetary winch with 60 feet per minute winch speed and hydraulic extensions to an unparalleled 28 feet of reach.

### Master Your Control

The Stellar 10628 is the only crane in its class to offer a state of the art fully proportional radio remote as a standard feature. With the radio remote control, operators can be in the best location to see the work and the load being lifted and it also allows them to stay out of harms way. The radio remote incorporates a proportional "trigger" that allows the operators to feather the crane for precise control capabilities. Additionally, the radio remote control handle includes engine start/stop functions, compressor on/off, engine speed controls, and an emergency shut-off.



### The Speed You Need

Maximizing winch speed is a common issue with today's crane operators. Stellar has addressed this issue and incorporated a planetary winch system with speeds to 60 ft./min., giving the 10628 crane over twice the speed of the competition. Stellar incorporates a planetary winch, providing mechanical and hydraulic brakes for added security.

Stellar 10628		
60 Feet / Min.	<u>Winch Speed Comparison</u> •single part line•	
	Competitor "Y"	Competitor "Z"
	30 Feet / Min.	30 Feet / Min.

Designed & Manufactured  
in the USA **STELLAR**  
INDUSTRIES INC.

10628 Telescopic Crane

# Stellar Cranes

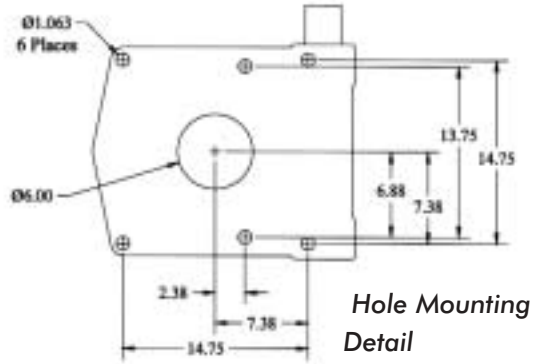
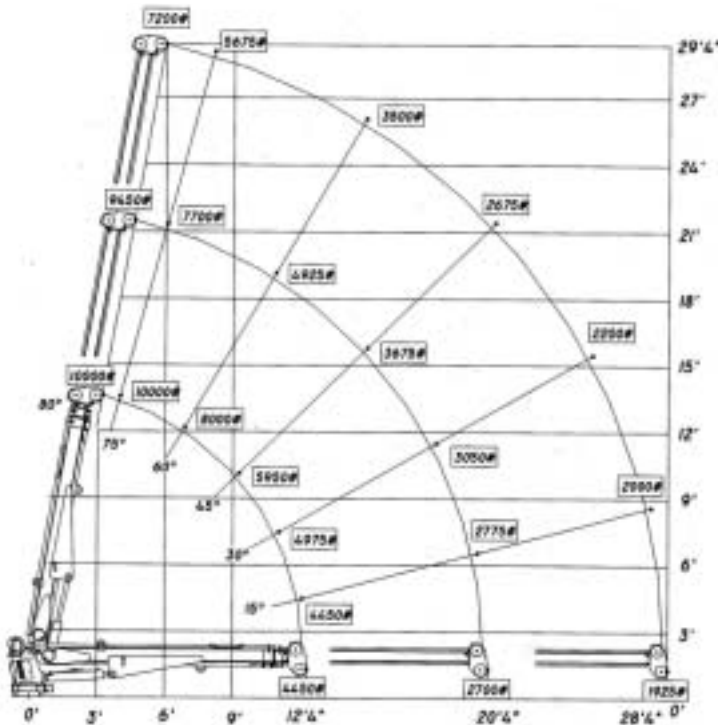
## Designed With You In Mind

The 10628 telescopic crane has "reached" the top of its class. Stellar's teams of designers have set parameters that were developed from customer input. Even *more* extension than is currently available on standard Stellar cranes. has been requested. Unequaled extension to 28 feet, 4 inches, coupled with a multifunction valve bank, which allows more than one function to be operated at one time, makes this the crane unequaled in the market place.

The 10628 features were designed to allow the user to do their job faster and more efficiently, than with any competitive product. Stellar Industries, is not only committed to making a quality product, it's committed to helping you work more productively.



## 10628 Capacity Chart



## Model 10628 Crane SPECIFICATION SHEET

Crane Rating: 55,000 ft-lbs  
 Standard Boom Length: 12' 4" from CL of Crane

Boom Extension:  
 1st stage: Hydraulic 96"  
 2nd stage: Hydraulic 96"

Maximum Horizontal Reach: 28'4" from CL of Crane  
 Maximum Vertical Lift: 29'4"  
 (from crane base)

Boom Elevation: -5 to +80 degree

### Winch Specification:

Rope Diameter: 7/16"  
 Line pull speed: 60 ft/min  
 Max. single part line: 5000 lbs  
 Max. double part line: 10,000 lbs  
 Rotation: 400 degree power (worm gear)

Lifting Capacities:  
 4,450 lbs @ 12'4"  
 2,700 lbs @ 20'4"  
 1,925 lbs @ 28'4"

Power Supply Required: PTO & Pump  
 (8 gpm @ 3000 psi)

Controls: Radio control standard for all functions.

Stowed Height: 34"  
 (crane only)

Mounting Space Required: 20 x 21 inches  
 Shipping Weight: 2900 lbs

280 West Third Street  
 P.O. Box 169  
 Garner, IA 50438  
 Telephone: 800-321-3741  
 Fax: 641-923-2812  
 Internet: [www.mechanictruck.com](http://www.mechanictruck.com)  
 email: [sales@mechanictruck.com](mailto:sales@mechanictruck.com)



Designed & Manufactured in the U.S.A.

\*Specifications may change without notification.  
 Copyright © 2002 Stellar Industries Inc.