

Stellar Cranes



The 10620 is the perfect crane for mining companies, heavy equipment dealers, construction companies, and various other large equipment companies. This crane features a 55,000 foot pound capacity and can lift a maximum of 10,000 pounds at 5.5 feet. Stellar Industries is the only U.S. manufacturer in this class of crane to offer these unique features which include the standard proportional radio remote control, a planetary winch with 60 feet per minute winch speed and hydraulic extensions to 20 feet of reach.

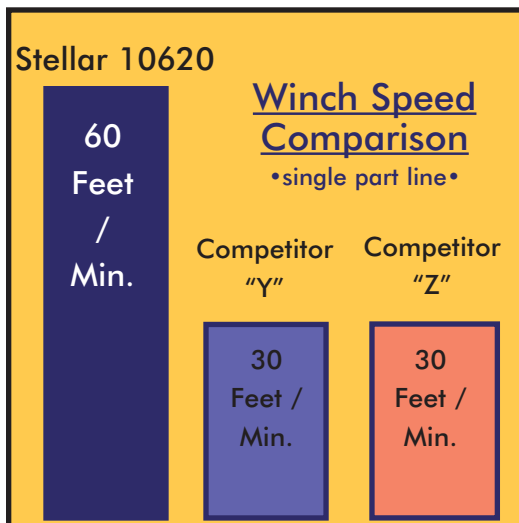
Master Your Control

The Stellar 10620 is the only crane in its class to offer a state of the art fully proportional radio remote as a standard feature. With the radio remote control, operators can be in the best location to see the work and the load being lifted and it also allows them to stay out of harms way. The radio remote incorporates a proportional "trigger" that allows the operators to feather the crane for precise control capabilities. Additionally, the radio remote control handle includes engine start/stop functions, compressor on/off, engine speed controls, and an emergency shut-off.



The Speed You Need

Maximizing winch speed is a common issue with today's crane operators. Stellar has addressed this issue and incorporated a planetary winch system with speeds to 60 ft./min., giving the 10620 crane over twice the speed of the competition. Stellar incorporates a planetary winch, providing mechanical and hydraulic brakes for added security.



Stellar Cranes

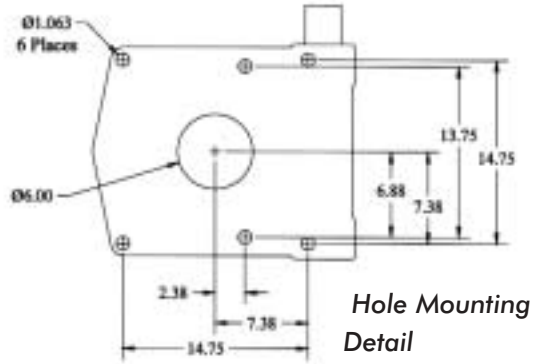
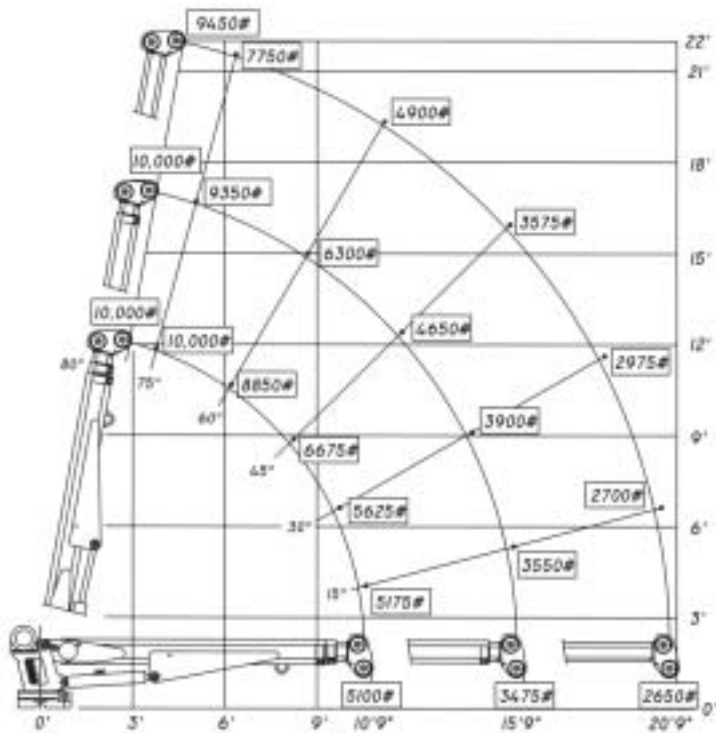
Designed With You In Mind

The 10620 telescopic crane is at the top of its class. Stellar's team of designers have set parameters that were developed from customer input.

The 10620 features were designed to allow the user to do their job faster, more efficiently, and more easily than with any competitive product. Stellar Industries, is not only committed to making a quality product, it's committed to helping you work more productively.



10620 Capacity Chart



Model 10620 Crane SPECIFICATION SHEET

Crane Rating: 55,000 ft-lbs
Standard Boom Length: 10' 9" from CL of Crane

Boom Extension:
1st stage: Hydraulic 60"
2nd stage: Hydraulic 60"

Maximum Horizontal Reach: 20'9" from CL of Crane
Maximum Vertical Lift: 22'
(from crane base)

Boom Elevation: -5 to +80 degree

Winch Specification:

Rope Diameter: 7/16"
Line pull speed: 60 ft/min
Max. single part line: 5000 lbs
Max. double part line: 10,000 lbs
Rotation: 400 degree power (worm gear)

Lifting Capacities:
5100 lbs @ 10'9"
3475 lbs @ 15'9"
2650 lbs @ 20'9"

Power Supply Required: PTO & Pump
(7-10 gpm @ 3000 psi)

Controls: Radio control standard for all functions.

Stowed Height: 34"
(crane only)

Mounting Space Required: 20 x 21 inches
Shipping Weight: 2150 lbs

280 West Third Street
P.O. Box 169
Garner, IA 50438
Telephone: 800-321-3741
Fax: 641-923-2812
Internet: www.mechanictruck.com
email: sales@mechanictruck.com



Designed & Manufactured in the U.S.A.

*Specifications may change without notification.
Copyright © 2002 Stellar Industries Inc.