

# maxilift®

series

## M90W

### STANDARD FEATURES

- Power Winch
- Remote Control
- Controlled Slewing



**HIGH PERFORMANCE**  
**Light Weight**  
**SERVICE CRANES**

Engineered for a working life of **15 Years\***  
... only **MAXILIFT**



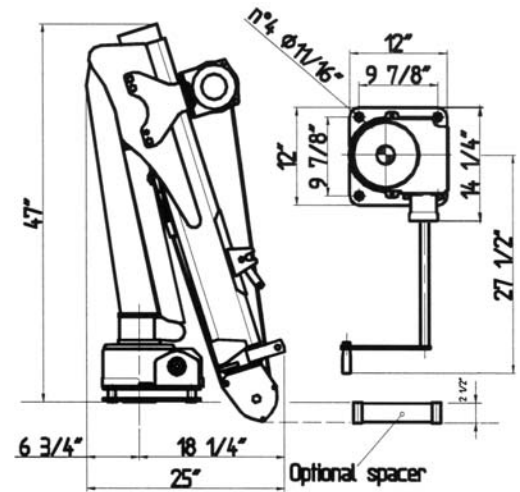
Manufactured by  
**Next Hydraulics®** s.r.l.  
BORETTO ITALY



## Technical Data

Crane model	M90W-M12	M90W-E12	M90W-ER12
Rating		6,700 ft lbs	
Capacity	1,840 lbs @ 3'5" – 660 lbs @ 9'5"		
Slewing angle	330 degrees		
Slewing torque	670 ft lbs		
Maximum slope angle	5 degrees		
Working pressure	2,300 psi		
Lift	hydraulic		
	(hand pump)	DC powered	DC powered
Slewing	manual crank	manual crank	hydraulic
Weight	240 lbs	235 lbs	255 lbs

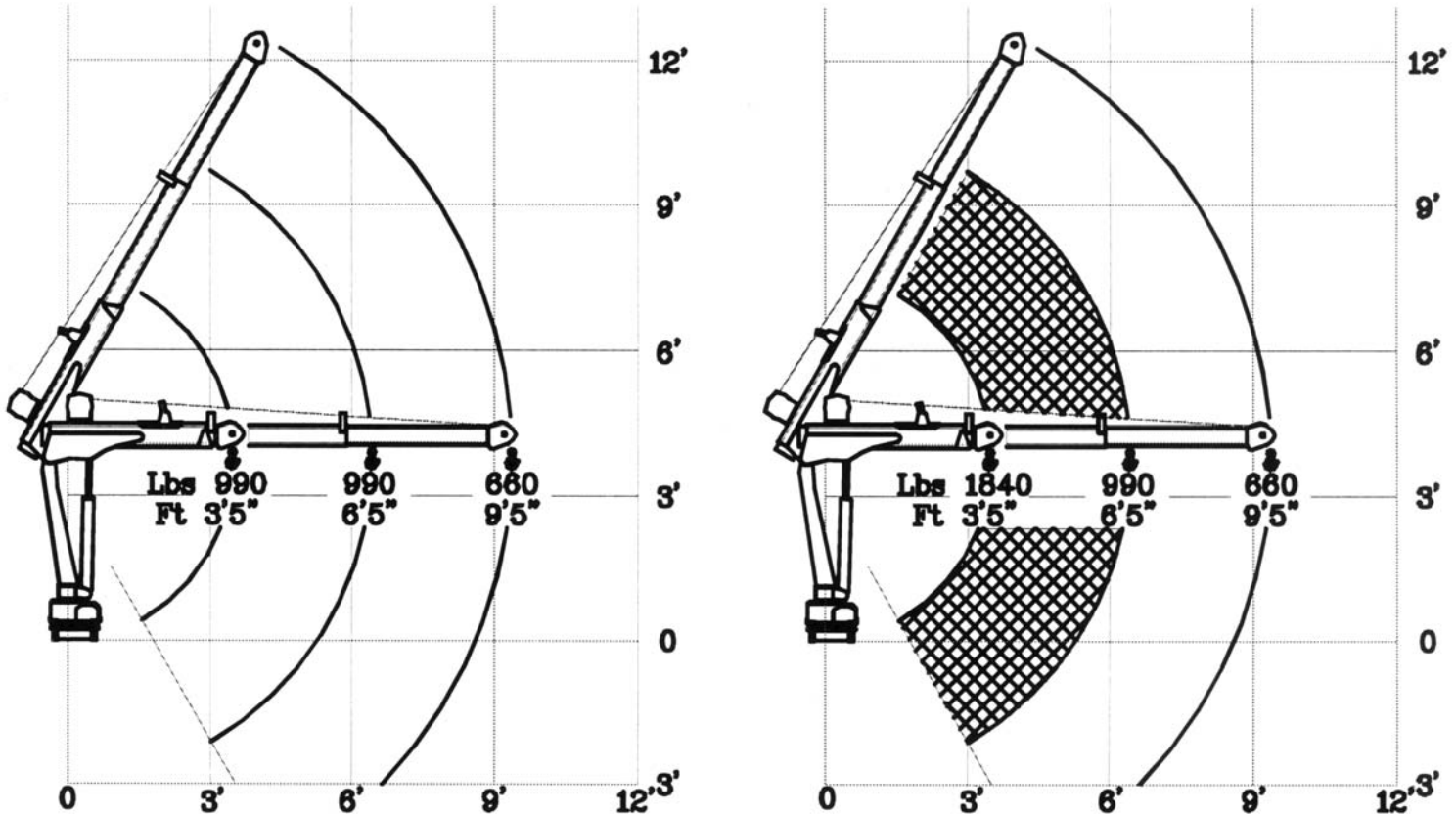
Available in 12 volt only.



Power winch and wired remote control – standard on all models.  
Options: Stabilizer outriggers, wireless remote controls, mounting spacer.

## \* Load diagram

Lifting class DIN 15018-H2-B3 – Maxilift cranes are designed for a normal working life of 15 years (details available upon request).



Distribution and technical support – Canada And USA

## TECHNOCRANE INC.

#403 - 17665 - 66A Avenue, Surrey, B.C., Canada V3S 2A7  
Phone: 604-575-2103 / 1-877-531-8644 • Fax: 604-575-2105  
e-mail: info@technocrane.ca • Website: www.technocrane.ca