

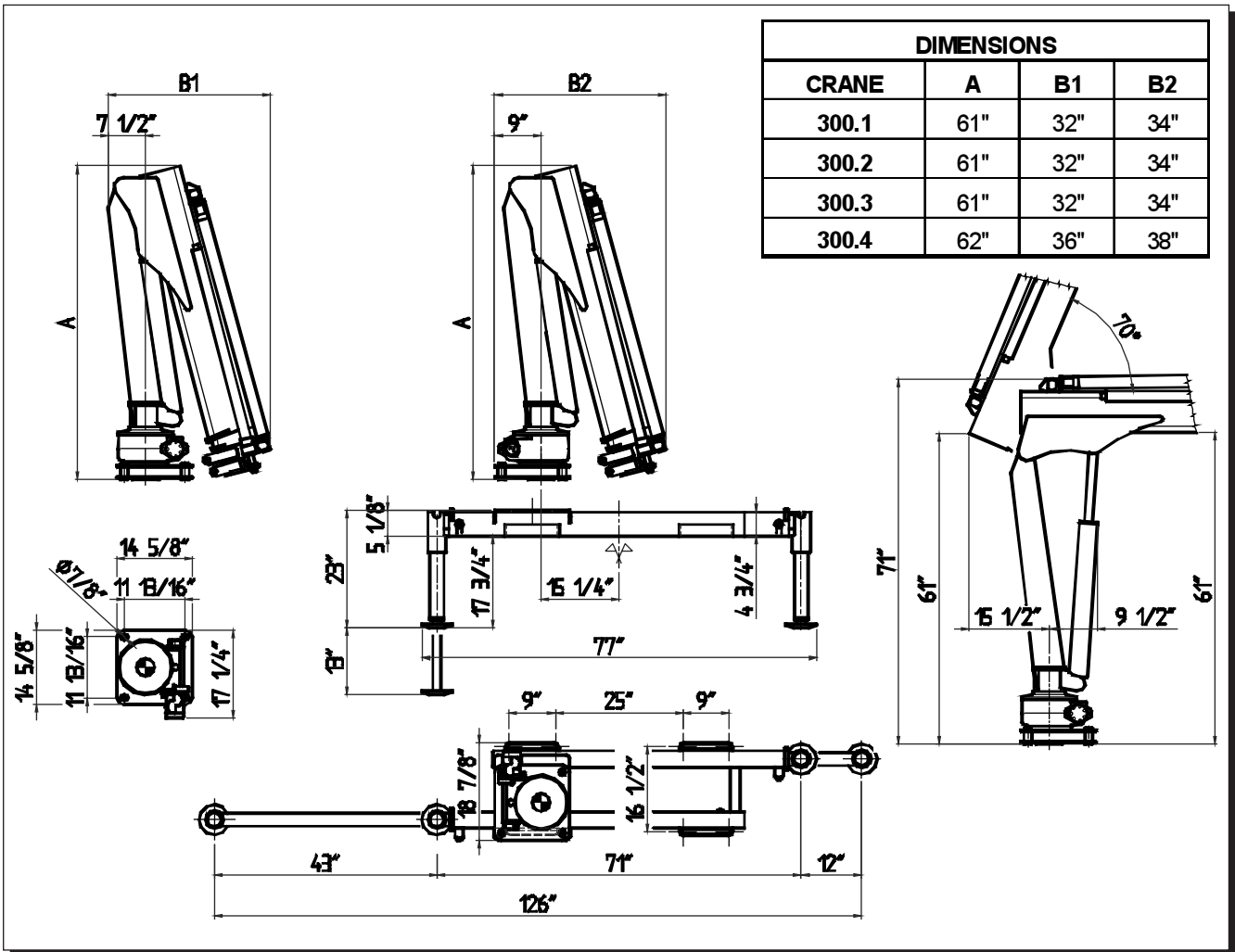
maxilift

TECHNICAL SHEET

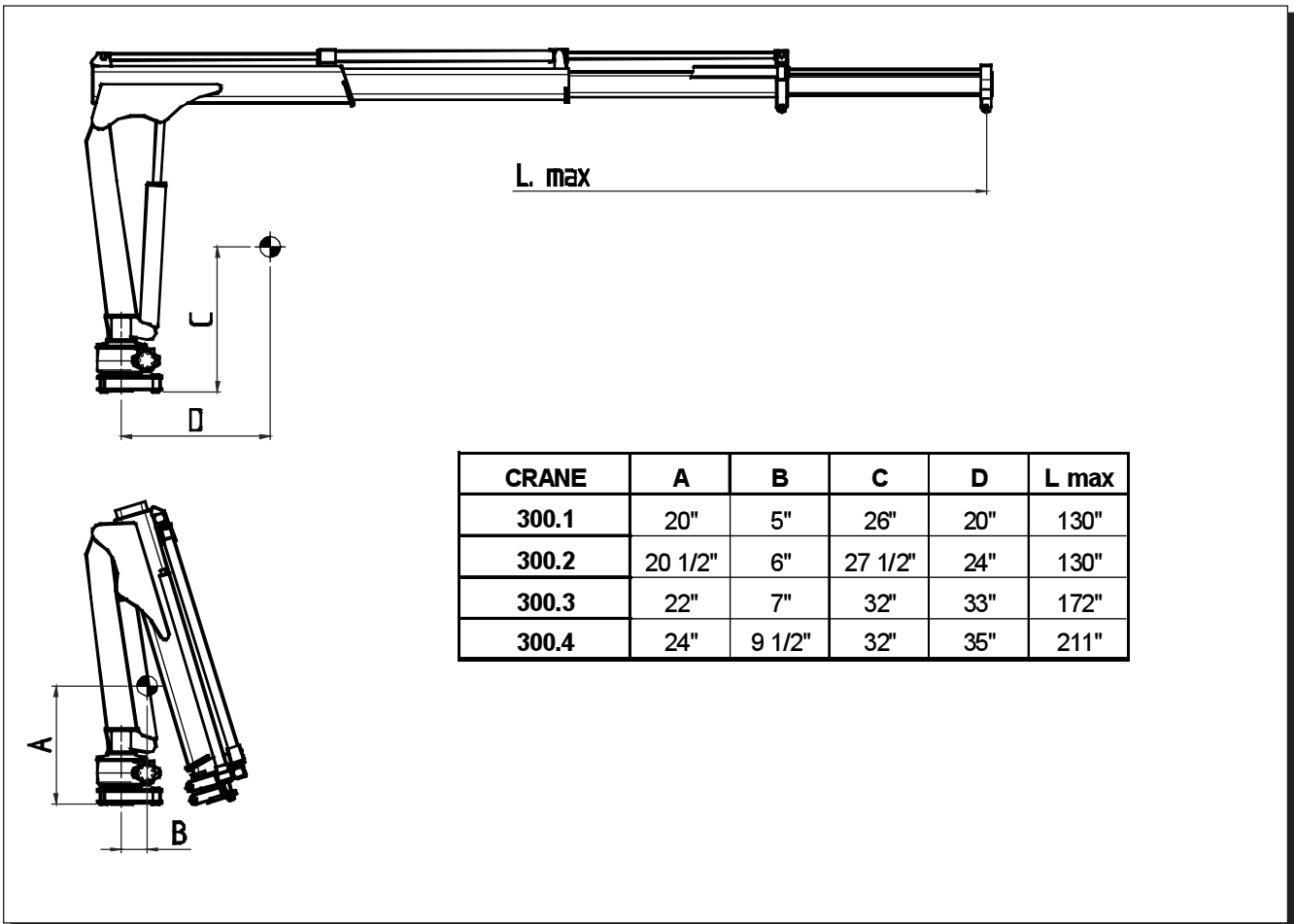


Next Hydraulics





DIMENSIONS			
CRANE	A	B1	B2
300.1	61"	32"	34"
300.2	61"	32"	34"
300.3	61"	32"	34"
300.4	62"	36"	38"



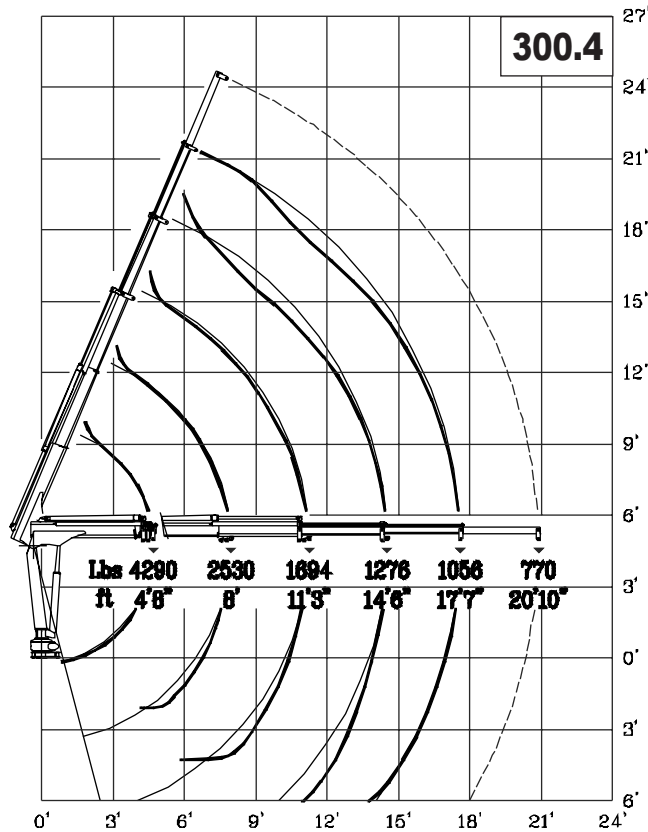
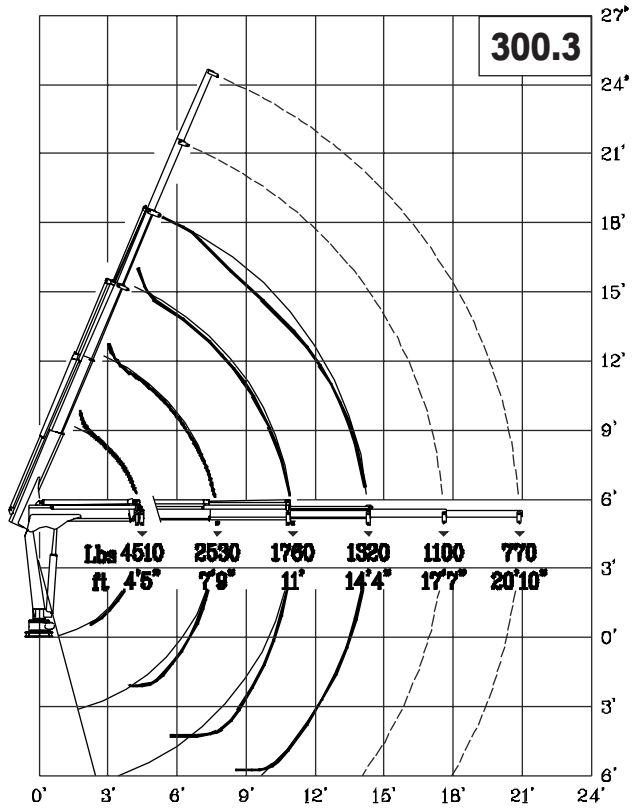
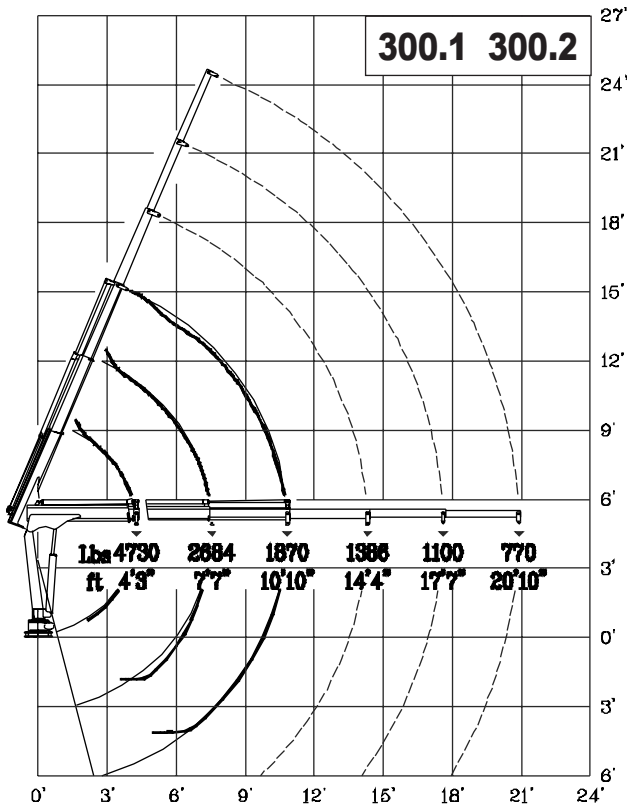
CRANE	A	B	C	D	L max
300.1	20"	5"	26"	20"	130"
300.2	20 1/2"	6"	27 1/2"	24"	130"
300.3	22"	7"	32"	33"	172"
300.4	24"	9 1/2"	32"	35"	211"

TECHNICAL DATA		VERSION				
		300	300.1	300.2	300.3	300.4
CRANE RATING		ft. lbs.	20,700			
STANDARD EXTENSIONS Nr (HYDRAULICS - MANUALS)		n°	1H+1M	2H	3H	4H
STANDARD OUTREACH		ft.	10' 10"	10' 10"	14' 4"	17' 7"
SLEWING ANGLE		°	360°			
MAXIMUM ANGLE SLOPE		°	4°			
SLEWING TORQUE		ft. lbs.	2,900			
MAX. LIFTING HEIGHT FROM CRANE BASE		ft.	14' 9"	14' 9"	18'	21"
SUGGESTED OIL FLOW		gpm.	2.6 - 3.1			
MAX. WORKING PRESSURE		psi	3,100			
BASIC CRANE WEIGHT	VERS. "H"	lbs.	470	495	550	580
	VERS. "E"		520	540	595	630
BASE WEIGHT WITH EXTENDABLE STABILIZERS		lbs.	265 - 285			
BEAM WEIGHT WITH 2 EXTENDABLE STABILIZERS		lbs.	110			
MOTOR ABSORPTION FOR ELECTROHYDR. CRANE 12V		A	min/max 80/250	80/250	80/250	80/250
		min/max				
MOTOR ABSORPTION FOR ELECTROHYDR. CRANE 24V		A	min/max 50/120	50/120	50/120	50/120
		min/max				
WINCH SPECIFICATIONS		U.M.				
MAX. WINCH SINGLE LINE CAPACITY (3 rd LAYER)		lbs.	1,550 (2,100)			

VERSION	DESCRIPTION
"E" 12V	ELECTROHYDRAULIC
"E" 24V	ELECTROHYDRAULIC
"H"	HYDRAULIC (PTO)

OPERATING TIMES												
VERSION	SLEWING (rpm)	LIFTING (sec)		LOWERING (sec)	EXTENSION OUT (sec)				EXTENSION IN (sec)			
		Pmin	Pmax		300.1	300.2	300.3	300.4	300.1	300.2	300.3	300.4
300 "E" 12/24V	1.8	23	35	18	12	25	35	44	9	16	26	35
300 "H" (P.T.O)	2.0	16		18	12	25	35	44	9	16	26	35

Pmax: max. working pressure
Pmin: min. working pressure



Lifting class **H2-B3**
DIN 15018

maxilit

by

Next Hydraulics



Via Mediterraneo n°6, 42022 Boretto (R.E.) Italy

Tel.: 0522-963008, Fax: 0522-963039

<http://www.nexthydraulics.it> E-mail: nexthydraulics@tin.it