

maxilift

TECHNICAL SHEET

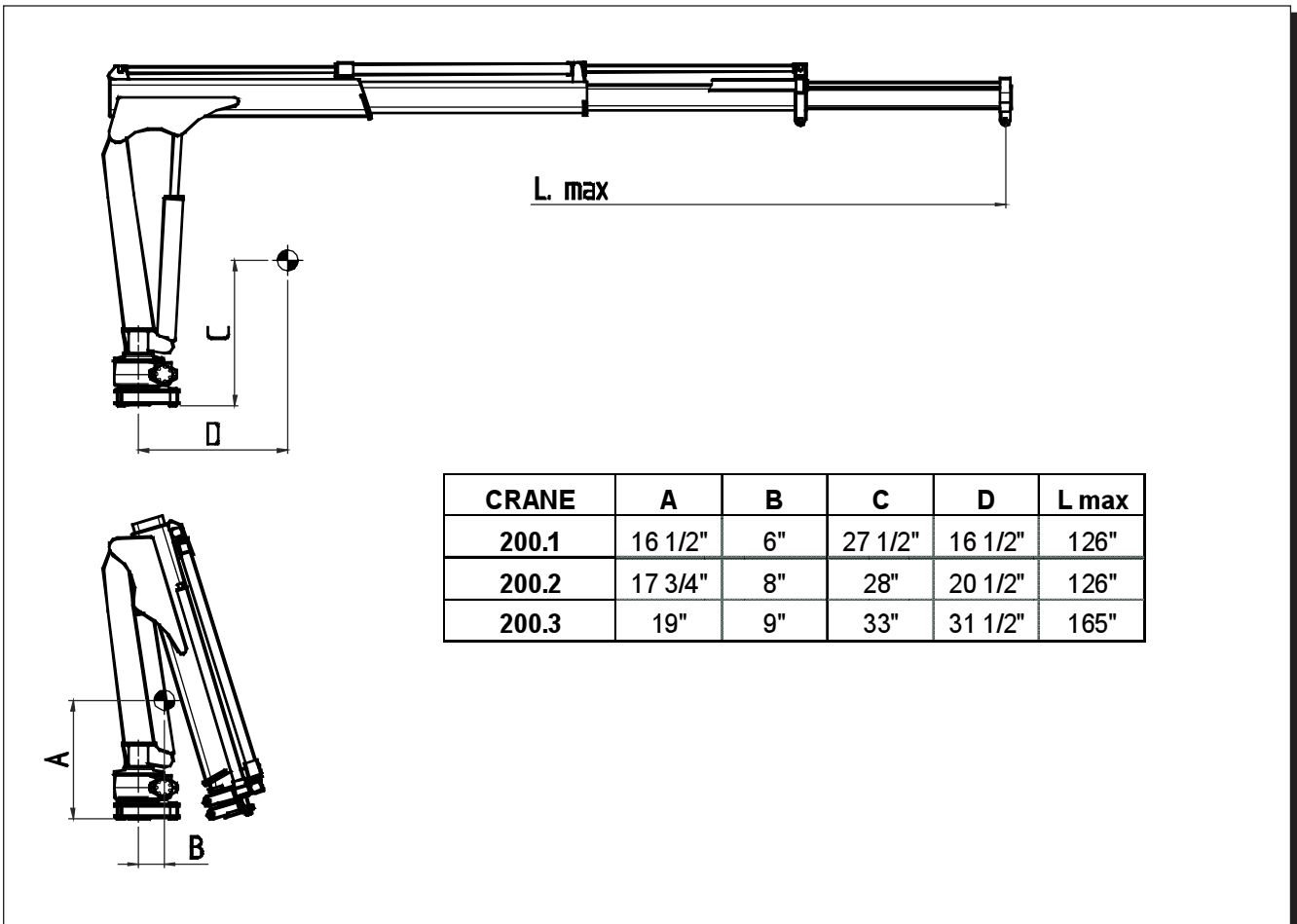
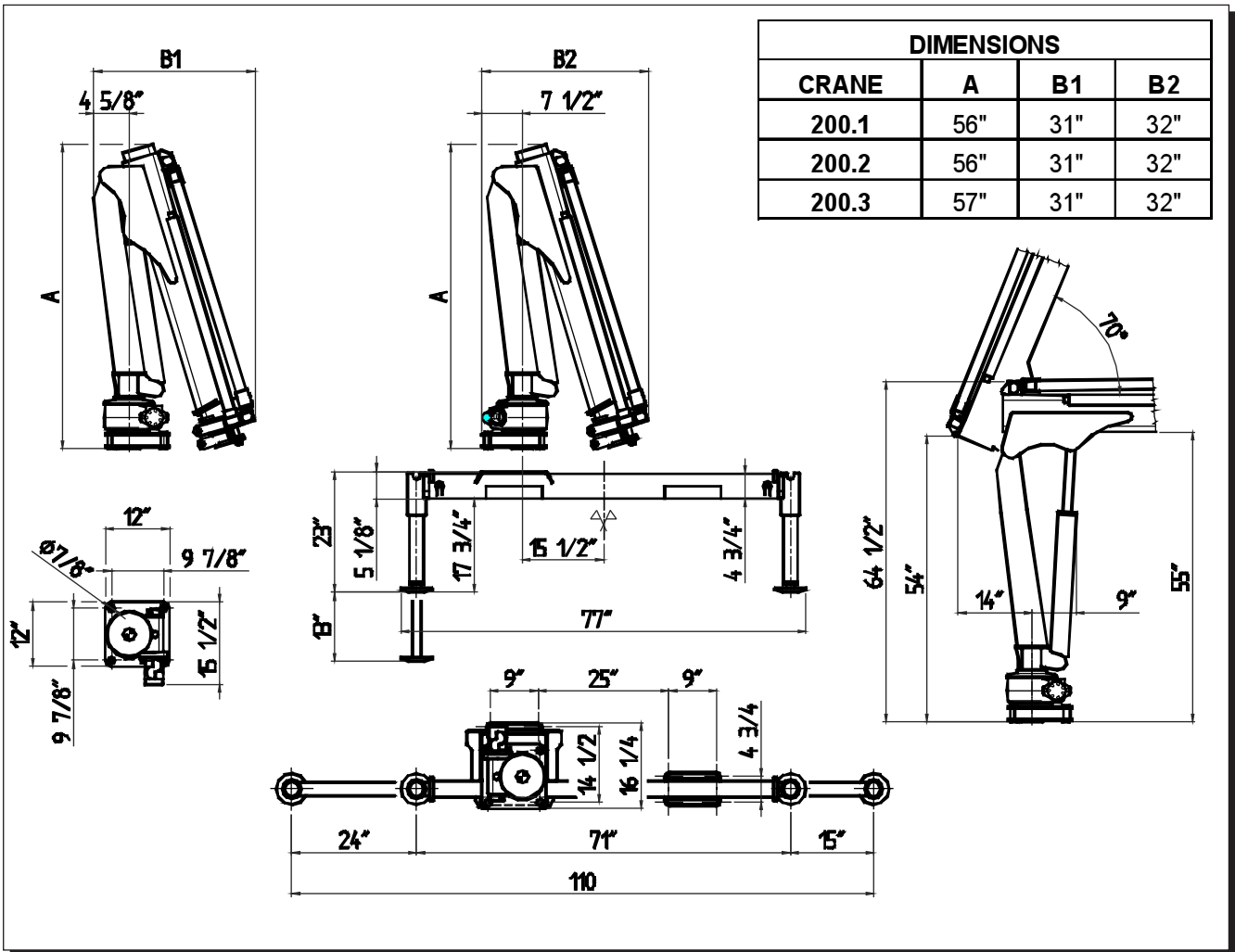


maxilift 200



Next Hydraulics





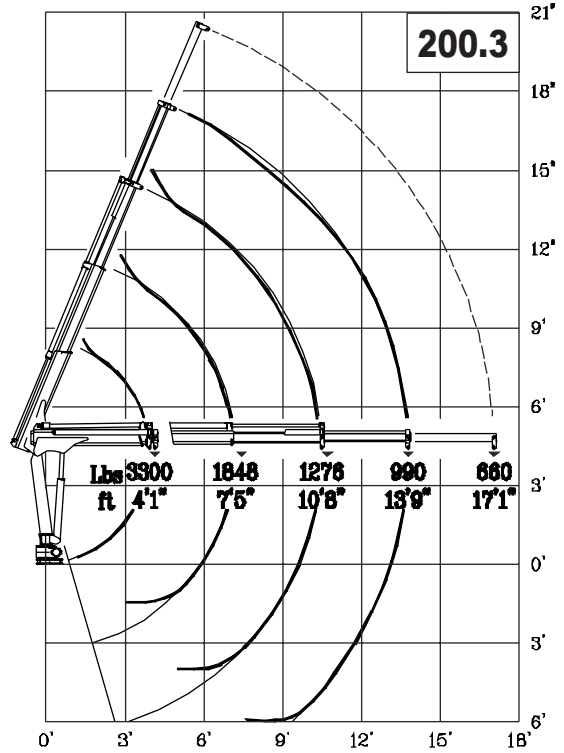
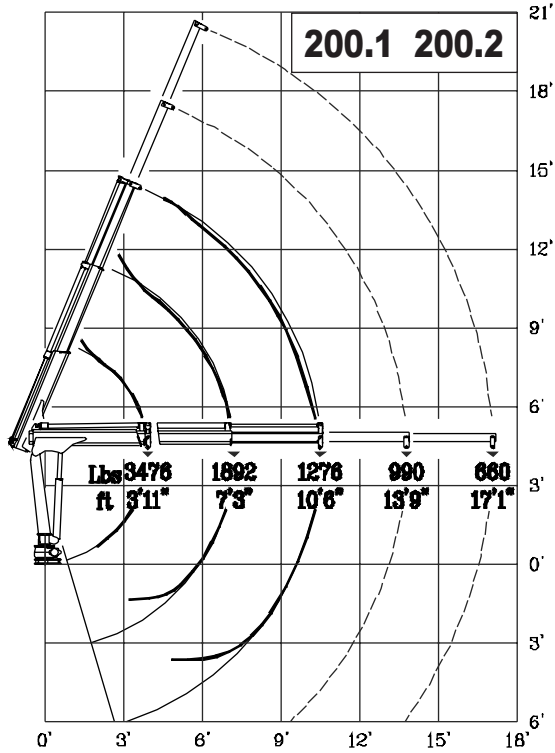
TECHNICAL DATA		VERSION			
		200	200.1	200.2	200.3
CRANE RATING		ft. lbs	14,000		
STANDARD EXTENSIONS Nr (HYDRAULICS - MANUALS)		n°	1H +1M	2H	3H
STANDARD OUTREACH		ft.	10' 6"	10' 6"	13' 8"
SLEWING ANGLE		°	360°		
MAXIMUM ANGLE SLOPE		°	4°		
SLEWING TORQUE		ft. lbs.	2,350		
MAX. LIFTING HEIGHT FROM CRANE BASE		ft.	14' 1"	14' 1"	17'
SUGGESTED OIL FLOW		gpm.	1.6 – 2.1		
MAX. WORKING PRESSURE		psi	2,900		
BASIC CRANE WEIGHT	VERS. "H"	lbs.	370	400	440
	VERS. "E"		420	440	480
BASE WEIGHT WITH EXTENDABLE STABILIZERS		lbs.	180 - 190		
BEAM WEIGHT WITH 2 EXTENDABLE STABILIZERS		lbs.	90 – 110		
MOTOR ABSORPTION FOR ELECTROHYDR. CRANE 12V	A	min/max	80/230	80/230	80/230
MOTOR ABSORPTION FOR ELECTROHYDR. CRANE 24V	A	min/max	50/120	50/120	50/120
WINCH SPECIFICATIONS		U.M.			
MAX. WINCH SINGLE LINE CAPACITY (3 rd LAYER)		lbs.	1,100		

VERSION	DESCRIPTION
"E" 12V	ELECTROHYDRAULIC
"E" 24V	ELECTROHYDRAULIC
"H"	HYDRAULIC (PTO)

OPERATING TIMES										
VERSION	SLEWING (rpm)	LIFTING (sec)		LOWERING (sec)	EXTENSION OUT (sec)			EXTENSION IN (sec)		
		Pmin	Pmax		200.1	200.2	200.3	200.1	200.2	200.3
		200 "E" 12/24V	1.8		16	30	16	12	25	37
200 "H" (P.T.O)	2.0	16		16	12	25	37	8	15	24

Pmax: max. working pressure
Pmin: min. working pressure

Lifting class **H2-B3**
DIN 15018



maxilit

by

Next Hydraulics



Via Mediterraneo n°6, 42022 Boretto (R.E.) Italy

Tel.: 0522-963008, Fax: 0522-963039

<http://www.nexthydraulics.it> E-mail: nexthydraulics@tin.it