

# maxilift

## TECHNICAL SHEET



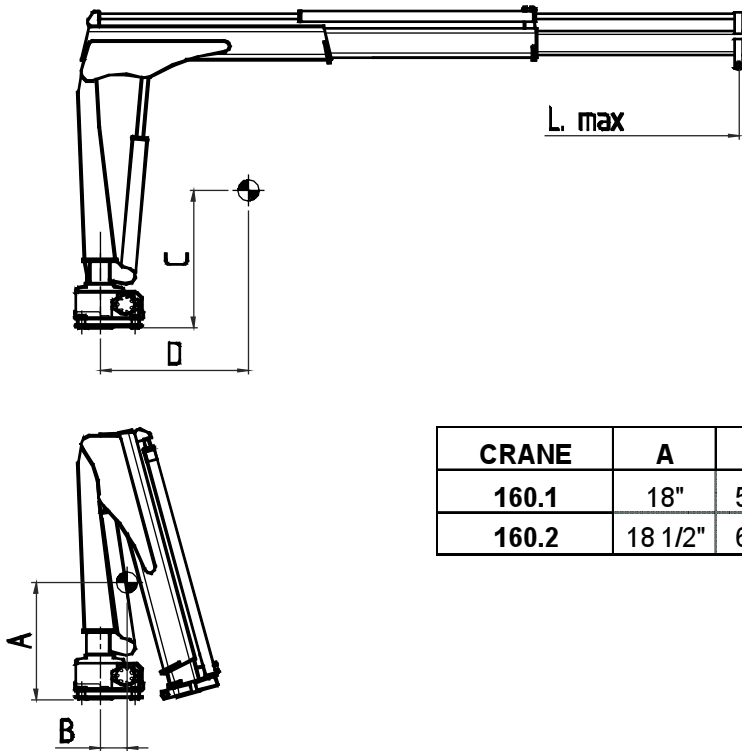
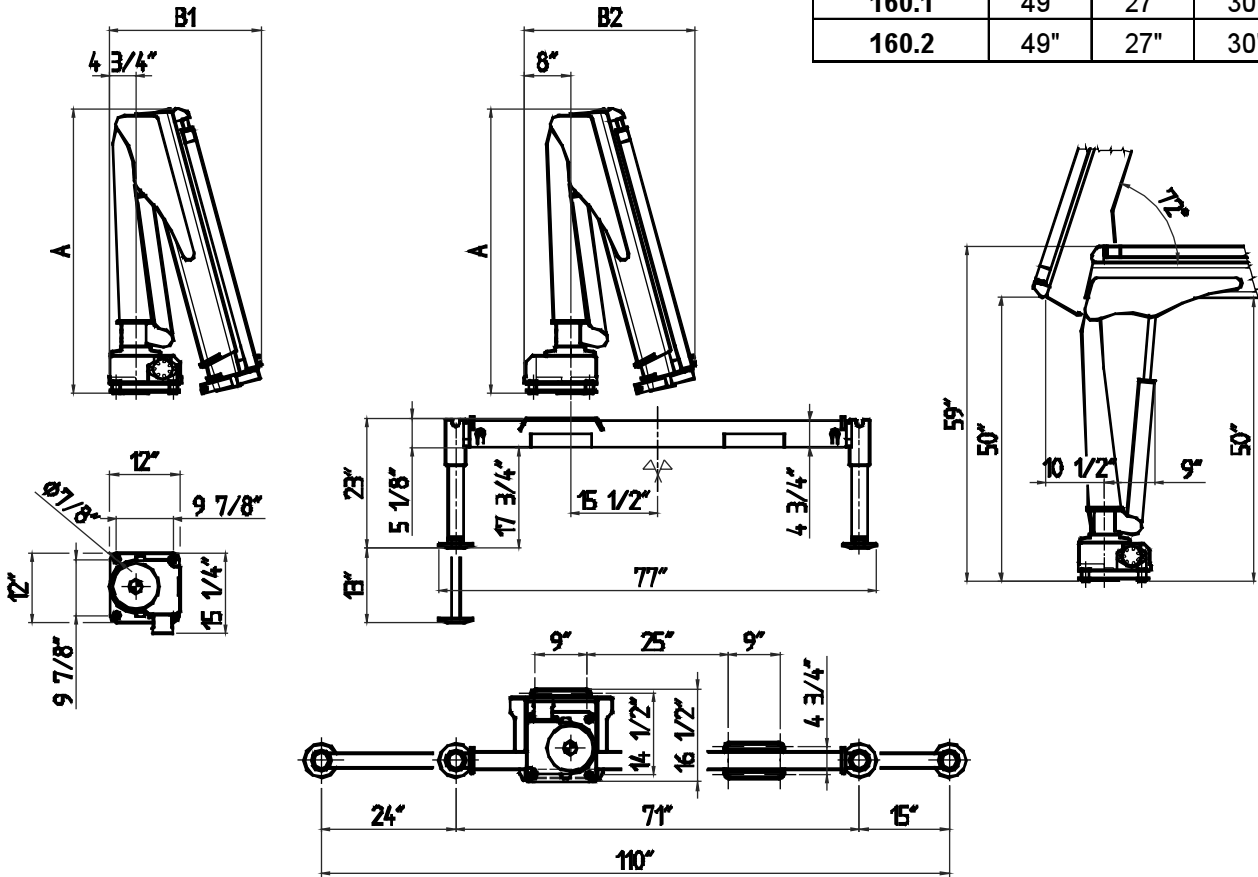
# 160



**Next Hydraulics**



DIMENSIONS			
CRANE	A	B1	B2
160.1	49"	27"	30"
160.2	49"	27"	30"



CRANE	A	B	C	D	L max
160.1	18"	5 1/2"	27"	14"	118"
160.2	18 1/2"	6 1/2"	28"	16"	118"

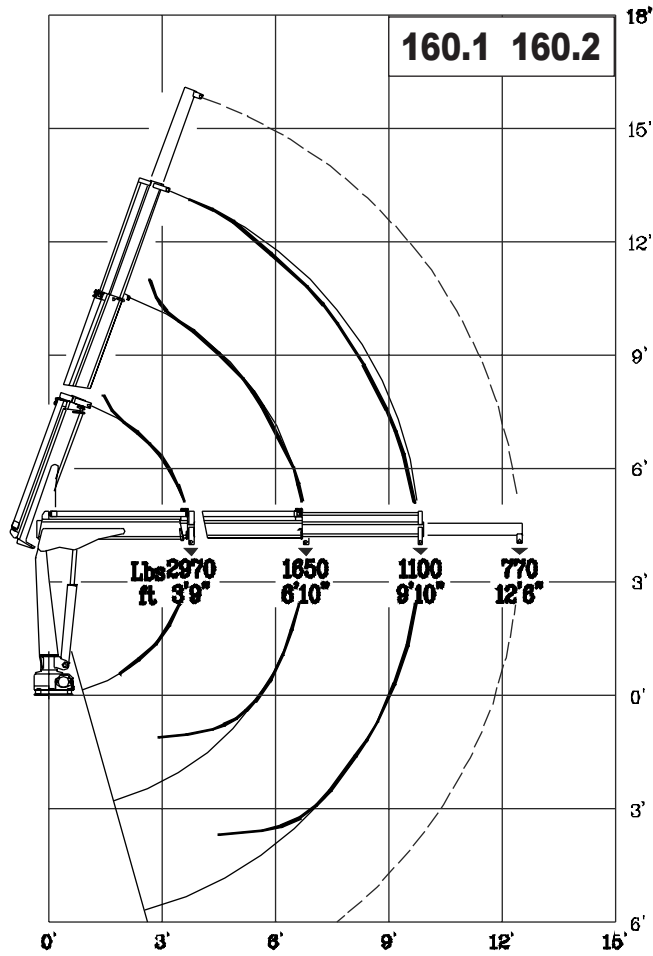
TECHNICAL DATA		VERSION			
		160	160.1	160.2	
TYPE					
CRANE RATING		ft. lbs.		11,000	
STANDARD EXTENSIONS Nr (HYDRAULICS - MANUALS)		n°	1H +1M	2H	
STANDARD OUTREACH		ft.		9' 10"	
SLEWING ANGLE		°		330°	
MAXIMUM ANGLE SLOPE		°		5°	
SLEWING TORQUE		ft. lbs.		1,330	
MAX. LIFTING HEIGHT FROM CRANE BASE		ft.		13' 2"	
SUGGESTED OIL FLOW		gpm.		1.6 – 2.1	
MAX. WORKING PRESSURE		psi.		2,900	
BASIC CRANE WEIGHT	VERS. "H"	lbs.	275	310	
	VERS. "E"		320	350	
BASE WEIGHT WITH EXTENDABLE STABILIZERS		lbs.		180 – 190	
BEAM WEIGHT WITH 2 EXTENDABLE STABILIZERS		lbs.		90 - 110	
MOTOR ABSORPTION FOR ELECTROHYDR. CRANE 12V		A	70/160	70/160	
		min/max			
MOTOR ABSORPTION FOR ELECTROHYDR. CRANE 24V		A	35/75	35/75	
		min/max			
WINCH SPECIFICATIONS		U.M.			
MAX. WINCH SINGLE LINE CAPACITY (3 <sup>rd</sup> LAYER)		lbs.		1,100	

VERSION	DESCRIPTION
"E" 12V	ELECTROHYDRAULIC
"E" 24V	ELECTROHYDRAULIC
"H"	HYDRAULIC (PTO)

OPERATING TIMES								
VERSION	SLEWING (rpm)	LIFTING (sec)		LOWERING (sec)	EX TENSION OUT (sec)		EXTENSION IN (sec)	
		Pmin	Pmax		160.1	160.2	160.1	160.2
		160 "E" 12/24V	1.8		14	27	15	12
160 "H" (P.T.O)	2.0	14		15	12	25	9	16

Pmax: max. working pressure  
Pmin: min. working pressure

Lifting class **H2-B3**  
DIN 15018



# maxilift

by

## Next Hydraulics



Via Mediterraneo n°6, 42022 Boretto (R.E.) Italy

Tel.: 0522-963008, Fax: 0522-963039

<http://www.maxiliftcrane.com> E-mail: [nexthdraulics@tin.it](mailto:nexthdraulics@tin.it)