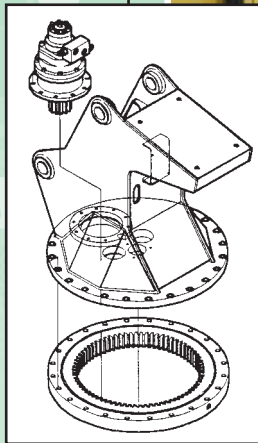


cobra

9506

PTO - HYDRAULIC CRANES



HIGH PERFORMANCE
Light Weight
SERVICE CRANES

Engineered for a working life of **15 Years***

... only **COBRA**



Manufactured by
Next Hydraulics® s.r.l.
BORETTO ITALY



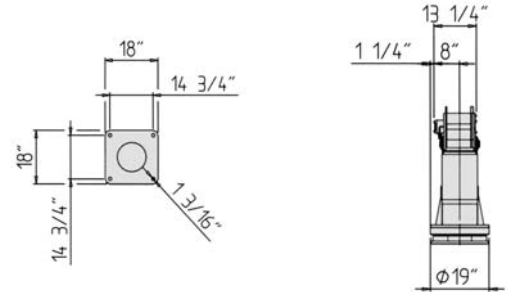
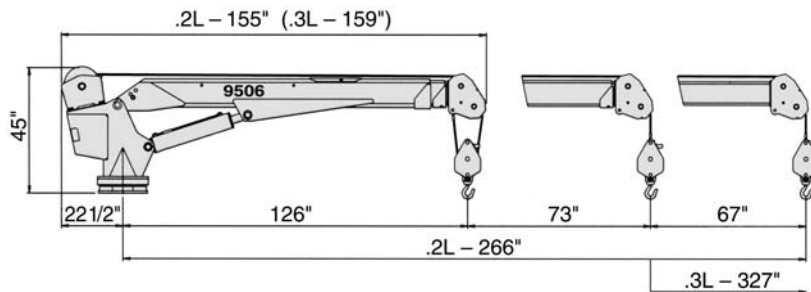
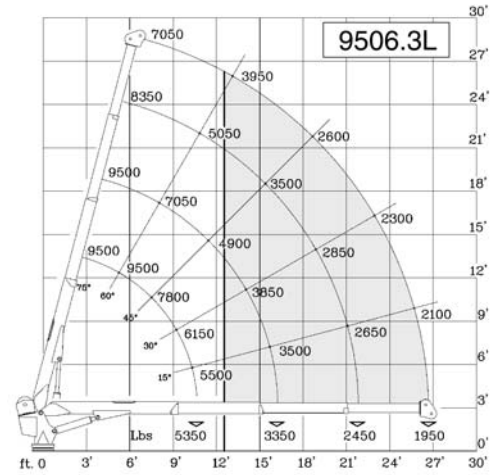
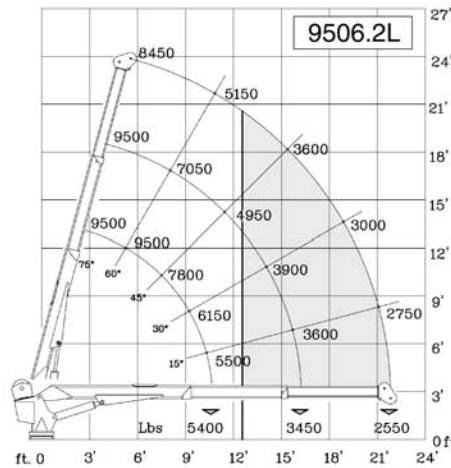
series

9506

PTO - HYDRAULIC CRANES

Single line working area

* Cobra crane structures are designed for a normal working life of 12 - 15 years according to the DIN Standard 15018 (load classification H2-B3) with routine service and maintenance. Details available upon request.



STANDARD FEATURES

- Engineered for 12 - 15 years of normal use*
- Hexagonal Swedish steel boom for less weight
 - 2 or 3 hydraulic boom extensions
- Remote control with 26 ft cable and plug
 - Planetary hydraulic hoist winch
 - Load limiting device
- Shear-ball bearing rotation system with planetary drive
 - Anti-2 block safety switch
 - Emergency manual overrides
- Proportional "winch + 1" remote control
 - 2 part load block
 - Crane is sand-blasted, painted with epoxy primer and polyurethane enamel

COBRA MODEL 9506

TECHNICAL DATA

Crane lift moment	56,000 ft. lbs.
Standard outreach	.2L-22' (.3L-27'3")
Lifting height (from crane base)	.2L-21'8" (.3L-27')
Boom elevation angle	-10 to 75 degrees
Slewing angle	continuous unlimited
Slewing Torque	5,500 ft.lbs.
Winch capacity, single line	5,050 lbs.
Winch capacity, two line	9,500 lbs.
Winch speed (2-3 wrap)	36-43 fpm
Wire rope, non-rotating	115' of 7/16"
Load hook rating	5 ton
Oil flow & pressure	6-7 gpm - 2,850 psi
Crane weight	.2L - 1,850 lbs. (.3L - 2,000 lbs.)

OPTIONS/ACCESSORIES

- Radio (wireless) remote control
- Outrigger stabilizers - manual or hydraulic
- Oil Reservoir

DISTRIBUTION and TECHNICAL SUPPORT – CANADA and USA
TECHNOCRANE INC.

#403 - 17665 - 66A Avenue, Surrey, B.C., Canada V3S 2A7

Phone: 604-575-2103 / 1-877-531-8644 • Fax: 604-575-2105

e-mail: info@technocrane.ca • Website: www.technocrane.ca

