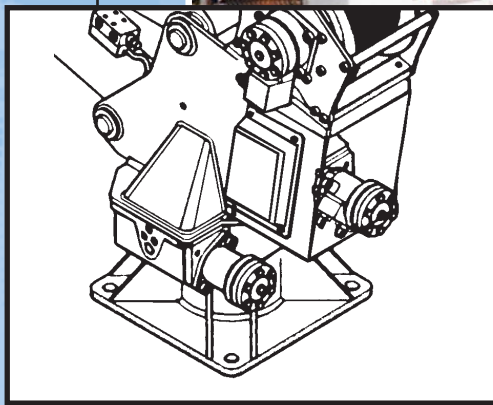
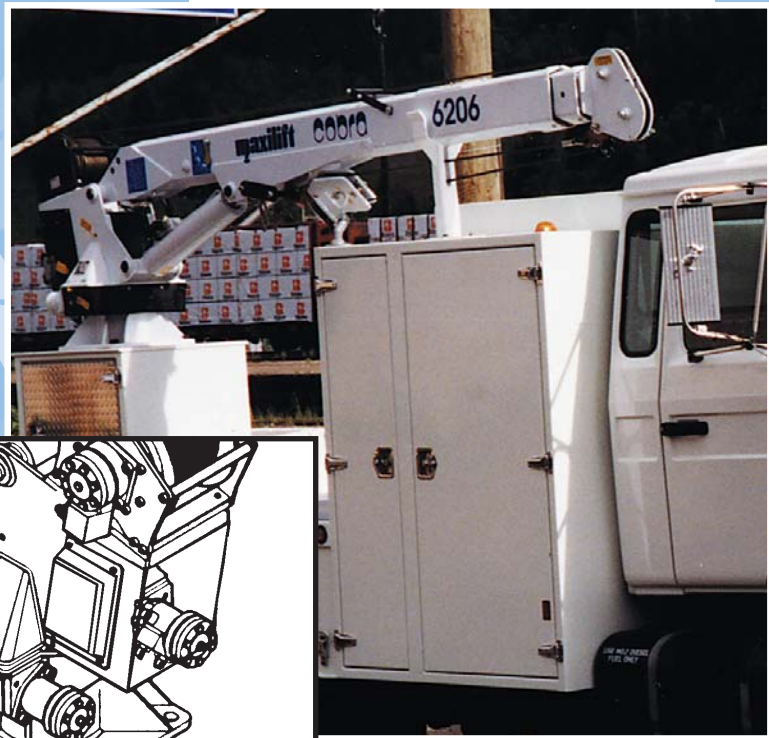


cobra

6206H

PTO HYDRAULIC CRANES



HIGH PERFORMANCE Light Weight SERVICE CRANES

Engineered for a working life of **15 Years***

... only **COBRA**



Manufactured by
Next Hydraulics® s.r.l.
BORETTO ITALY

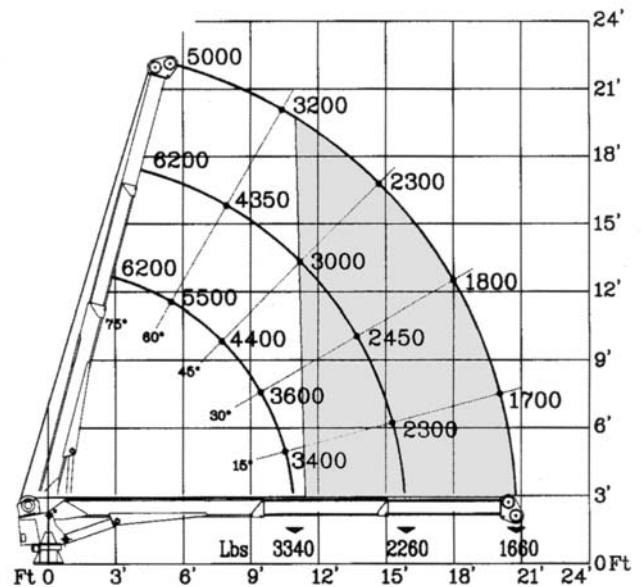
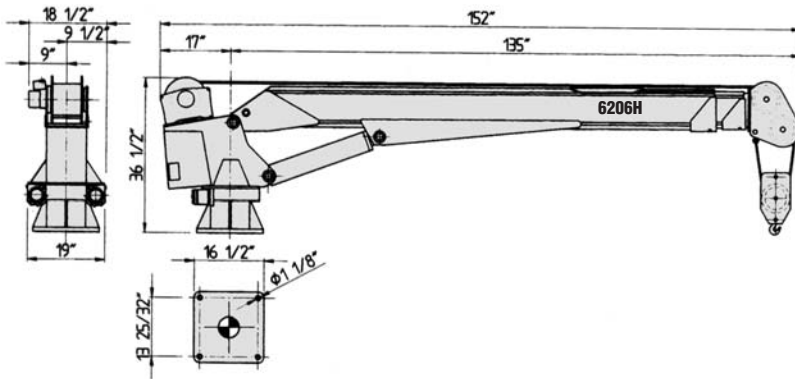


series

6206H

PTO - HYDRAULIC CRANES

Single line working area



* Cobra crane structures are designed for a normal working life of 12 - 15 years according to the DIN Standard 15018 (load classification H2-B3) with routine service and maintenance. Details available upon request.

STANDARD FEATURES

- Engineered for 12 - 15 years of normal use*
- Hexagonal Swedish steel boom for less weight
 - Remote control with 26 ft cable and plug
 - Planetary hydraulic hoist winch
 - Load limiting device
 - Anti-2 block safety switch
 - Emergency manual overrides
 - Shift-on-the-go 2 speed controller
 - 2 part load block
- Structure is sand-blasted, painted with epoxy primer and polyurethane enamel (RAL9003 white)

OPTIONS/ACCESSORIES

- Proportional remote control
- Outrigger stabilizers - manual or hydraulic
- Radio (wireless) remote control

COBRA MODEL 6206H

TECHNICAL DATA

Crane lift moment	37,000 ft. lbs.
Standard outreach (fully hydraulic)	21'
Slewing angle	(continuous unlimited)
Boom elevation angle	-5 to 75 degrees
Lifting height (from crane base)	21'
Winch capacity, 1-2 lines	3,100-6,200 lbs.
Winch speed <i>single line</i>	46 fpm
Winch speed <i>two line</i>	23 fpm
Wire rope, non-rotating	100' of 3/8"
Load hook rating	3 metric ton
Oil flow & pressure	4.2 gpm - 2,600 psi
Crane weight	1,280 lbs.

DISTRIBUTION and TECHNICAL SUPPORT – CANADA and USA
TECHNOCRANE INC.

#403 - 17665 - 66A Avenue, Surrey, B.C., Canada V3S 2A7

Phone: 604-575-2103 / 1-877-531-8644 • Fax: 604-575-2105

e-mail: info@technocrane.ca • Website: www.technocrane.ca

