

cobra

5105H

PTO HYDRAULIC CRANES



HIGH PERFORMANCE
Light Weight
SERVICE CRANES

Engineered for a working life of **15 Years***

... only **COBRA**



Manufactured by
Next Hydraulics® s.r.l.
BORETTO ITALY

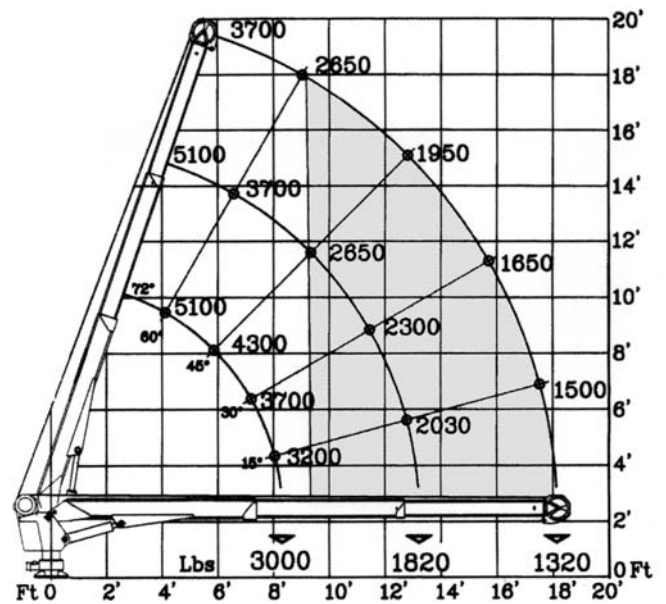
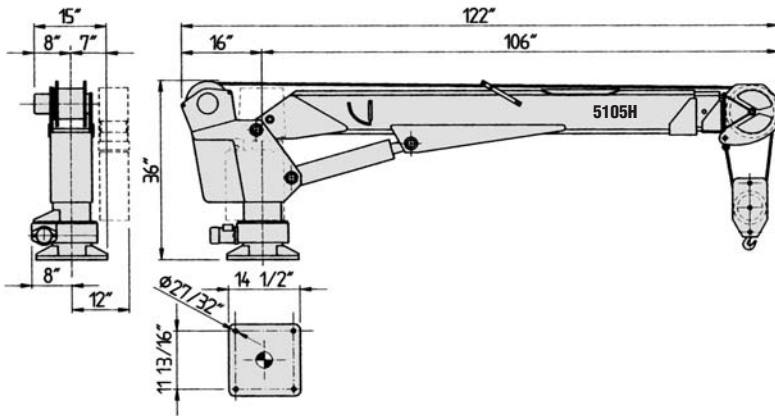


series

5105H

PTO - HYDRAULIC CRANES

Single line working area



* Cobra crane structures are designed for a normal working life of 12 - 15 years according to the DIN Standard 15018 (load classification H2-B3) with routine service and maintenance. Details available upon request.

STANDARD FEATURES

- Engineered for 12 - 15 years of normal use*
- Hexagonal Swedish steel boom for less weight
 - Remote control with 26 ft cable and plug
 - Planetary hydraulic hoist winch
 - Load limiting device
 - Anti-2 block safety switch
 - Emergency manual overrides
 - Shift-on-the-go 2 speed controller
 - 2 part load block
- Structure is sand-blasted, painted with epoxy primer and polyurethane enamel (RAL9003 white)

OPTIONS/ACCESSORIES

- Proportional remote control
- Outrigger stabilizers - manual or hydraulic
- Radio (wireless) remote control

COBRA MODEL 5105H

TECHNICAL DATA

| | |
|-------------------------------------|----------------------|
| Crane lift moment | 25,000 ft. lbs. |
| Standard outreach (fully hydraulic) | 18'4" |
| Slewing angle | continuous unlimited |
| Boom elevation angle | -5 to 72 degrees |
| Lifting height (from crane base) | 18'4" |
| Winch capacity, 1-2 lines | 2550-5100 lbs. |
| Winch speed <i>single line</i> | 33 fpm |
| Winch speed <i>two line</i> | 16.5 fpm |
| Wire rope, non-rotating | 100' of 5/16" |
| Load hook rating | 3 metric ton |
| Oil flow & pressure | 3.2 gpm - 2,500 psi |
| Crane weight | 1,000 lbs. |

DISTRIBUTION and TECHNICAL SUPPORT – CANADA and USA
TECHNOCRANE INC.

#403 - 17665 - 66A Avenue, Surrey, B.C., Canada V3S 2A7

Phone: 604-575-2103 / 1-877-531-8644 • Fax: 604-575-2105

e-mail: info@technocrane.ca • Website: www.technocrane.ca

