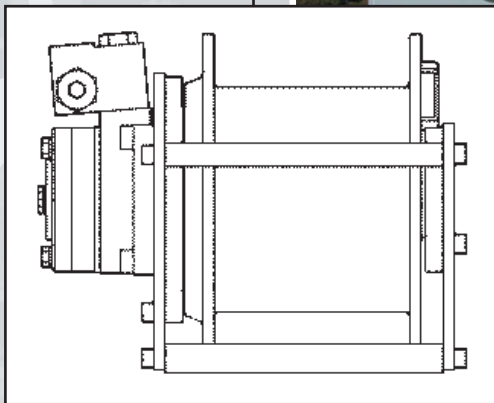


cobra 5105E

12V-DC ELECTRO HYDRAULIC CRANES



HIGH PERFORMANCE
Light Weight
SERVICE CRANES

Engineered for a working life of **15 Years***

... only **COBRA**



Manufactured by
Next Hydraulics® s.r.l.
BORETTO ITALY

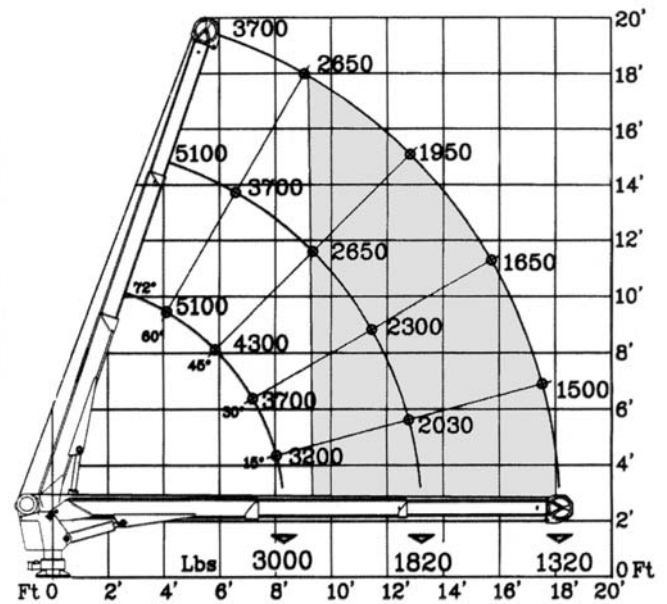
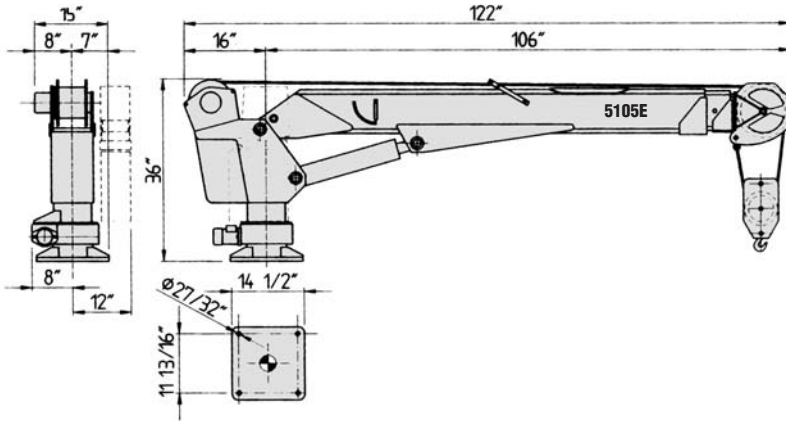


series

5105E

12V-DC ELECTRO HYDRAULIC CRANES

Single line working area



* Cobra crane structures are designed for a normal working life of 12 - 15 years according to the DIN Standard 15018 (load classification H2-B3) with routine service and maintenance. Details available upon request.

STANDARD FEATURES

- Engineered for 12 - 15 years of normal use*
- Hexagonal Swedish steel boom for less weight
 - Remote control with 26 ft cable and plug
 - Planetary hydraulic hoist winch
 - Load limiting device
 - Anti-2 block safety switch
 - Emergency manual overrides
 - Shift-on-the-go 2 speed controller
 - HD fan-cooled 12vDC Power Pack
 - 2 part load block
- Structure is sand-blasted, painted with epoxy primer and polyurethane enamel (RAL9003 white)

OPTIONS/ACCESSORIES

- Proportional remote control
- Outrigger stabilizers - manual or hydraulic
- Radio (wireless) remote control

COBRA MODEL 5105E

TECHNICAL DATA

Crane lift moment	25,000 ft. lbs.
Standard outreach (fully hydraulic)	18'4"
Slewing angle	continuous unlimited
Boom elevation angle	-5 to 72 degrees
Lifting height (from crane base)	18'4"
Winch capacity, 1-2 lines	2,550 - 5,100 lbs.
Winch speed single line	16-31 fpm
Winch speed two line	8-16 fpm
Wire rope, non-rotating	100' of 5/16"
Load hook rating	3 metric ton
Maximum operating pressure	2,500 psi
Crane weight	1,025 lbs.

DISTRIBUTION and TECHNICAL SUPPORT – CANADA and USA
TECHNOCRANE INC.

#403 - 17665 - 66A Avenue, Surrey, B.C., Canada V3S 2A7

Phone: 604-575-2103 / 1-877-531-8644 • Fax: 604-575-2105

e-mail: info@technocrane.ca • Website: www.technocrane.ca

