

cobra

3304W

12V-DC Electro Hydraulic Cranes



- **Light weight**
- **High tensile steel construction**
- **Built-in safety devices**
- **Efficient planetary winch**
- **Remote control**

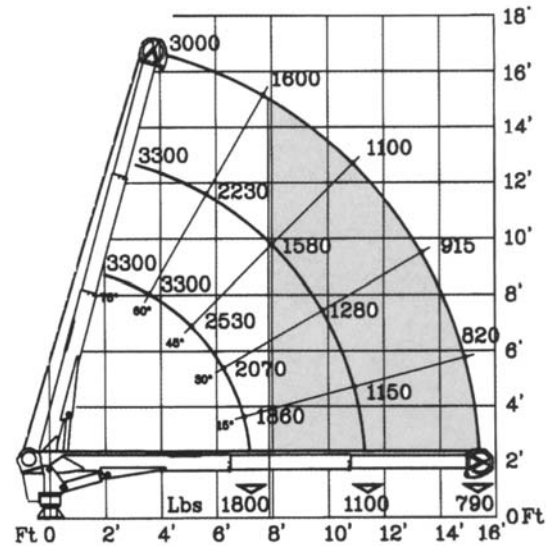
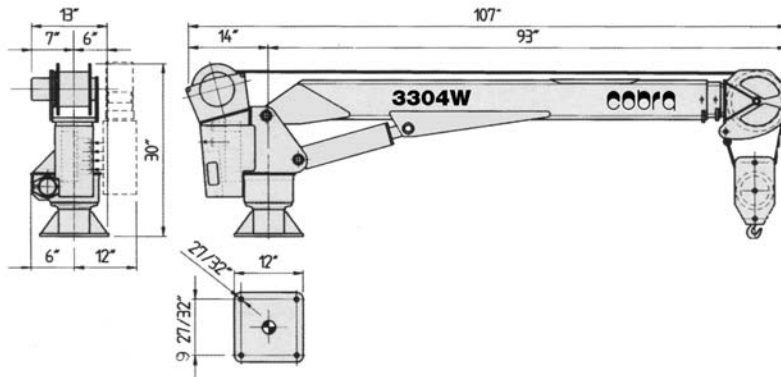
TECHNO
CRANE Inc
Big on Small Cranes

series

3304W

12V-DC ELECTRO HYDRAULIC CRANES

Single line working area



STANDARD FEATURES

- Remote control with plug and 26 ft. cable
 - Efficient planetary hoist winch
 - Load limiting device
 - Anti-two block safety switch
- Emergency manual overrides on control valve
- Hexagonal Swedish steel boom for light weight
 - Simultaneous winch and boom operation
 - Two part block

OPTIONS/ACCESSORIES

- Continuous rotation
- Proportional remote control
- Radio remote control (proportional - off/on)
- Outrigger stabilizers manual or hydraulic

COBRA MODEL 3304W

TECHNICAL DATA

Crane lift moment	13,000 ft. lbs.
Standard outreach (hydraulic to 11' 9")	15' 8"
Slewing angle	400°
Boom elevation	-5° + 75°
Lifting height (from crane base)	15' 8"
Winch capacity, single line	1,650 lbs.
Winch line speed (1st layer)	13-17 fpm
Winch line speed (3rd layer)	17-22 fpm
Wire rope, galvanized aircraft	65 ft. of 1/4"
Remote control	OFF / ON
Maximum operating pressure	2,300 psi
Crane weight	660 lbs

