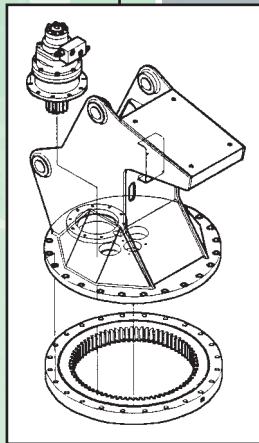


cobra

12006

PTO - HYDRAULIC CRANES



HIGH PERFORMANCE
Light Weight
SERVICE CRANES

Engineered for a working life of **15 Years***

... only **COBRA**



Manufactured by
Next Hydraulics® s.r.l.
BORETTO ITALY





STANDARD FEATURES

- Engineered for 12 - 15 years of normal use*
- Hexagonal Swedish steel boom for less weight
 - 2 or 3 hydraulic boom extensions
- Remote control with 26 ft cable and plug
 - Planetary hydraulic hoist winch
 - Load limiting device
- Shear-ball bearing rotation system with planetary drive
 - Anti-2 block safety switch
 - Emergency manual overrides
- Proportional multi-function remote control
 - 2 part load block
 - Crane is sand-blasted, painted with epoxy primer and polyurethane enamel

COBRA MODEL 12006

TECHNICAL DATA

Crane lift moment	67,000 ft. lbs.
Slewing angle	continuous unlimited
Slewing torque	6,900 ft. lbs
Boom elevation angle	-10 to 75 degrees
Winch capacity, <i>single line</i>	5,950 lbs.
Winch capacity, <i>two line</i>	10,800 lbs.
Winch speed <i>two line</i>	33-40 fpm
Wire rope, non-rotating	115' of 1/2"
Load hook rating	5 ton
Oil flow & pressure	6-7 gpm - 3,000 psi

* Cobra crane structures are designed for a normal working life of 12 - 15 years according to the DIN Standard 15018 (load classification H2-B3) with routine service and maintenance. Details available upon request.

OPTIONS/ACCESSORIES


- Radio (wireless) remote control
- Outrigger stabilizers - manual or hydraulic
- Oil reservoirs

12006 Series

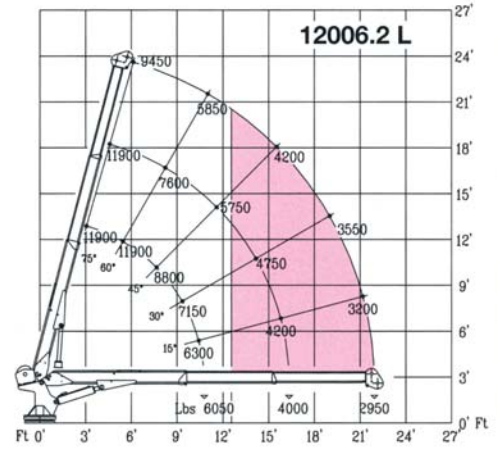
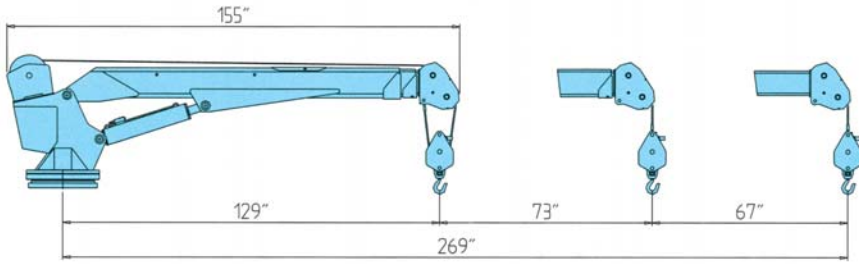
Short boom version

Long boom version

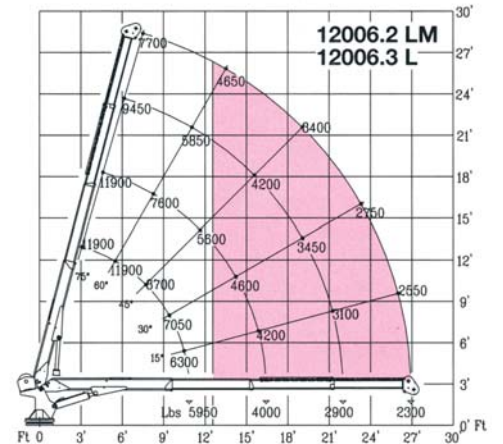
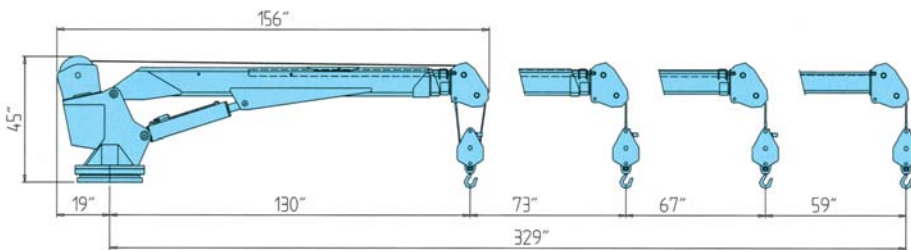
Version 12006.()	.2S	.2SM	.3S	.2L	.2LM	.3L
Hydraulic extensions	2	2	3	2	2	3
Hydraulic extension	10'	10'	15'	11'2"	11'2"	16'2"
Manual extensions	-	1	-	-	1	-
Manual extension	-	5'	-	-	5'	-
Standard outreach	18'9"	24'	24'	22'3"	27'6"	27'6"
Lifting height, from base	18'9"	23'9'	23'9"	22'	27'	27'
Crane weight (lbs.)	2,050	2,130	2,200	2,100	2,180	2,270

 Single line working area

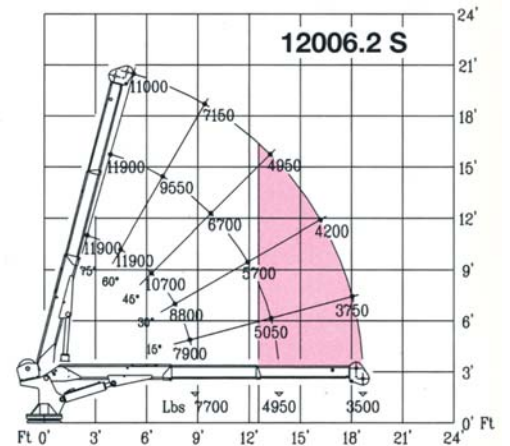
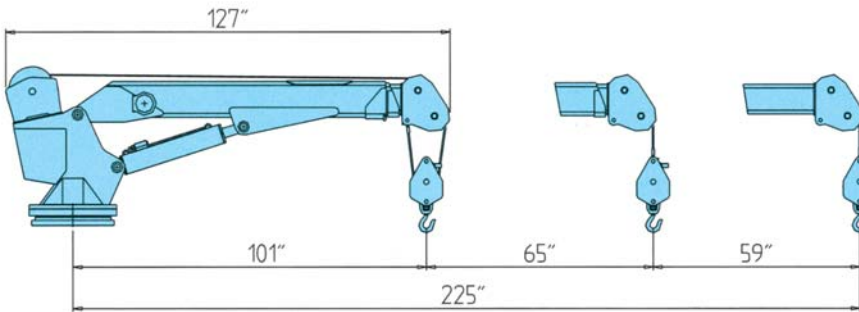
Model: 12006.2 L



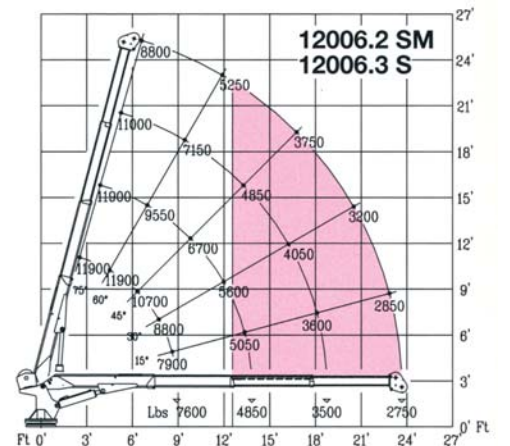
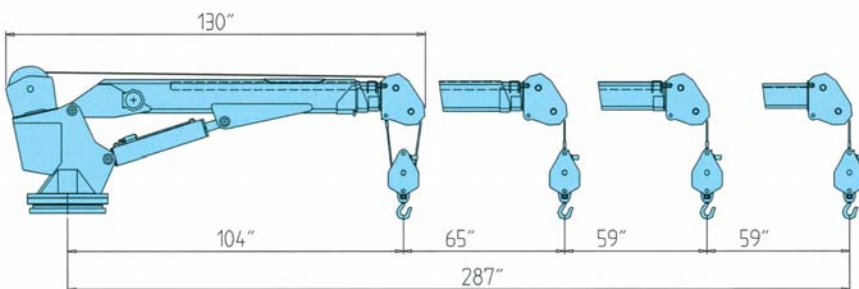
Model: 12006.2 LM and 12006.3 L



Model: 12006.2 S



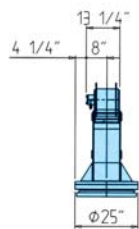
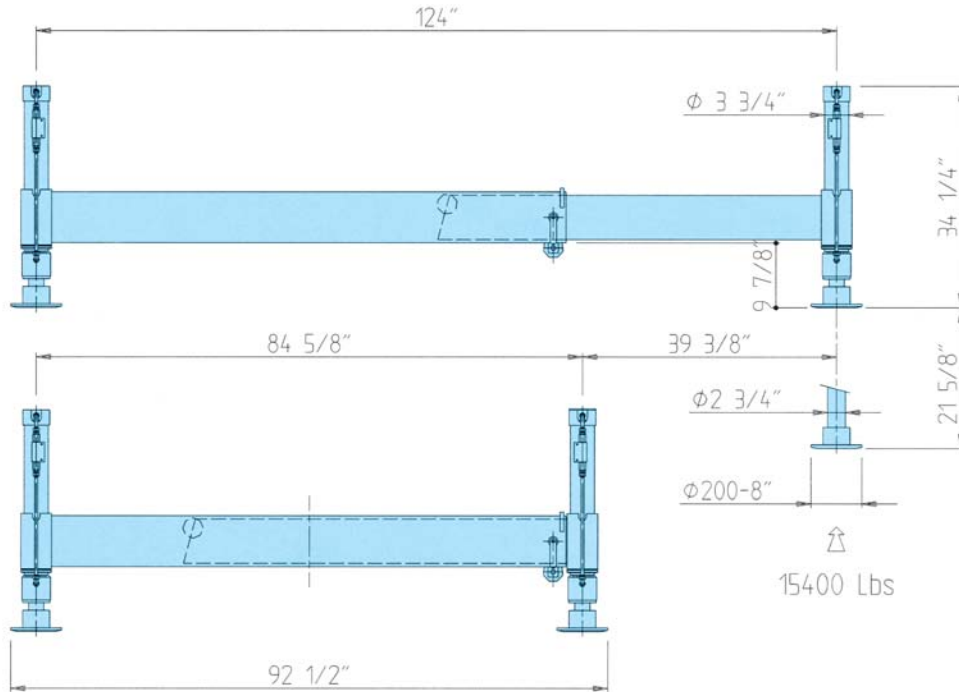
Model: 12006.2 SM and 12006.3 S



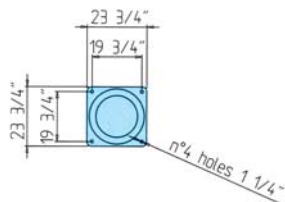


OUTRIGGER

One side hydraulic or manual out, with hydraulic legs



Rear view and mounting



Hole pattern

DISTRIBUTION and TECHNICAL SUPPORT – CANADA and USA
TECHNOCRANE INC.

#403 - 17665 - 66A Avenue, Surrey, B.C., Canada V3S 2A7

Phone: 604-575-2103 / 1-877-531-8644 • Fax: 604-575-2105

e-mail: info@technocrane.ca • Website: www.technocrane.ca

