

**PREDAT AIR™**  
HYDRAULIC AIR COMPRESSORS



# SMARTER. SMALLER. STRONGER.

REVOLUTIONARY NEW HYDRAULIC AIR COMPRESSOR

## SMARTER

The power of information and control. Equipped with a remote digital LCD control unit, operators can now monitor hydraulic and compressor oil temperature, pressure, system hours and error logs, for on-the-spot analysis and troubleshooting. Settings are adjustable for a customized air system.

Work in extreme climates. Built-in freeze protection and an over-temp safety sensor defend the system from severe heat and cold, extending system life.

Standby and save costs. The PREDATAIR features a standby mode that helps maximize service intervals and system life. When you stop using air, the system goes into standby. When you start using air again, the system automatically restarts, generating the air you need. This saves you fuel costs, maintenance costs and wear on your hydraulic system.

## SMALLER

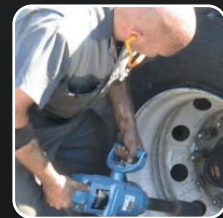
Good things come in small packages. The PREDATAIR utilizes the latest in compact air compressor technology, ensuring a complete air system including cooler, compressor, and components from a 150LB (dry) package. Instantly save space and weight for tools and equipment.

## STRONGER

Big air to get the job done fast. The rotary-screw compressor packs up to 40 or 60 CFM, enough muscle to power a diverse range of applications, from 5LB air guns to a 60LB jackhammer.

VMAC stands behind its products. In a recent dealer survey, VMAC ranks among top suppliers by offering prompt, comprehensive and professional technical and customer support.

A 2-year warranty comes standard on every VMAC air system.



MANUFACTURED BY

**VMAC**  
VEHICLE MOUNTED AIR COMPRESSORS

## SPECIFICATIONS

### Compressor Type

- Direct Driven Rotary Screw

### Output

- Up to 40 CFM and 60 CFM
- Up to 150 PSI (adjustable with digital display from 100 to 150 PSI in 10 PSI steps.)

### Weight

- 150 LBS (dry)

### Dimensions

- 16.5" (w) x 24.0" (l) x 18.0" (h)

### Connections

- #12 ORB Hydraulic Supply
- #16 ORB Hydraulic Return
- 3/4" NPT Air Discharge
- 12 Volt @ 30 Amp Electrical Input

### Warranty

- 2 Years

### Hydraulic Requirements

- 9-14 GPM or 13-21 GPM
- 2,100 PSI Normal Operating Pressure
- 2,800 PSI Relief Setting

### Safety Features

- High Temperature Shutdown
- Cold Start Protection
- 200 PSI Air Pressure Relief Valve
- Automatic Air Pressure Blowdown
- One Way Check Valve



## FEATURES

**COLD START** Built in protection for cold climate starts. If the hydraulic oil is colder than -15 C (5 F) it will circulate through the manifold and return to the reservoir. Once the oil is warm enough, the compressor will start.

**SOFT START** Designed to reduce the initial load on the hydraulic system. This limits the air pressure to 40-50 PSI until the compressor oil reaches 32 C (90 F) when starting the compressor. This also reduces the hydraulic load on start-up.

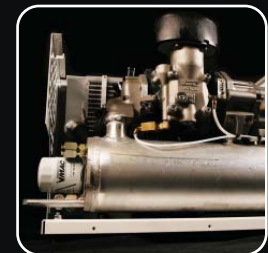
**UNLOAD** When the system reaches max PSI, the inlet valve closes and the system does not produce any more air. The compressor also internally reduces air pressure to 40-50 PSI to reduce the load on the system. When air is used, the system operates to max PSI to meet air requirements.

**STANDBY** After a period of no air use, the system will switch from its Unload state to Standby. In Standby mode the compressor is shut down and produces no load on the hydraulic system. When the downstream air pressure reaches 120 PSI, the compressor automatically re-starts and produces air to match the output being used.

**THROTTLE ENABLE** For optimal operation, a two-speed throttle control should be used. This allows the system to operate at the minimum allowable hydraulic flow when air is not being used and idles up when air is needed. By reducing the engine speed during times of no use, fuel consumption is reduced and hydraulic load and ultimately heat is also reduced.

**DISPLAY UNIT** The LCD is used to observe system status, change adjustable parameters and turn the system on and off. The display panel is capable of being remote mounted in a cabinet or in the cab. It will show system messages, such as cold start, hydraulic and compressor oil temperatures as well as service reminders.

**COOLER BYPASS CHECK VALVE** A valve protects the hydraulic cooler from damage when internal cooler pressure is above normal by bypassing hydraulic oil past the cooler and back to the reservoir.



**SMARTER. SMALLER. STRONGER.**

MANUFACTURED BY



1333 Kipp Road, Nanaimo, BC, Canada V9X 1R3